

Peace's Transformative Circles



2024 ANNUAL REPORT



Peace
Neighborhood
Center



“

Peace encompasses all that 'family' should mean.

The staff radiate love and care, and treat people from all walks of life with respect. When you come to Peace, you can see the true essence of what a community should be.

In August of 2004, Peace drove me and 7 other girls to Baton Rouge, Louisiana to help me move in to college when my mom couldn't afford to. On that drive, we stopped [to tour] other colleges and universities along the way. That [whole experience] changed the trajectory of my life. Without Peace, I wouldn't be a first generation college graduate.

It's important for people to appreciate how far Peace's impact radiates out beyond that little red building, across families, communities, and generations — even beyond Washtenaw County. "

— Talasha Moore
*Licensed Rehabilitation Counselor
Peace Alum and current Board Member*



DEAR PEACE FAMILY

Some 53 years ago, a small circle of diverse community members helped to start Peace Neighborhood Center. Since that time, the influence and impact we've had on people's lives has grown exponentially. So have our circles of community support—whose generosity made 2024 a year of extraordinary and transformative growth.

Last year, Peace served over 5,000 people, or 800 households, across Washtenaw County. Our sphere of influence and the wraparound support we provide extends to hundreds of families—not only at our main facility and Wellness Center, but also at three public housing communities in Ann Arbor.

And with the new Peace HUB Community Resource Center in Ypsilanti Township now open, Peace and our community partners will be able to better serve Ypsilanti area residents where they live. Already, the new Peace HUB serves over 100 households weekly through the HUB's Food Pantry and community meals—and our nonprofit partners have hosted a range of programs

Every year, we witness Peace's influential circle widen as Peace Alumni graduate from college and go on to careers where they can pay it forward by helping others. I'm always reminded that no matter how far Peace Kids go, they always remain a vital part of our expansive Peace Family Circle. Two Peace Alum currently serve on our Board; 10 work on Peace's staff. And just recently, a Peace Alum who is a nurse practitioner, taught parents and kids all about CPR at a Peace Family Night.

At Peace, we measure growth in multiple dimensions. Last year, we not only grew our Program Staff and physical footprint, we also expanded and deepened the ways we support our young people's learning, by introducing STEAM-themed experiential learning throughout our After-School and Summer Youth Programs. Peace kids learned that science can be fun by exploring different concepts through creative learning activities, and applying what they learned to the real world. Peace kids also had the chance to explore the world of STEAM beyond the classroom through summer field trips, and two transformational road trips.

Last year, we also expanded the support groups and counseling support we offer for middle and high school youth through our Wellness Program.

The transformative growth Peace has experienced would not be possible without our expansive and generous circle of community donors and local funders. Know that your long-time support helped Peace secure two transformational grants from new funding partners last year — making it possible for Peace to invest \$2.4 million in building the new HUB Community Resource Center.

Peace's circle of support and our sphere of influence is greater than ever. As we look to expand and deepen the ways Peace helps people improve their lives through new partnerships—I am reminded of one of Peace's Guiding Principles: "We focus on what we do best and collaborate with others who are best in class."

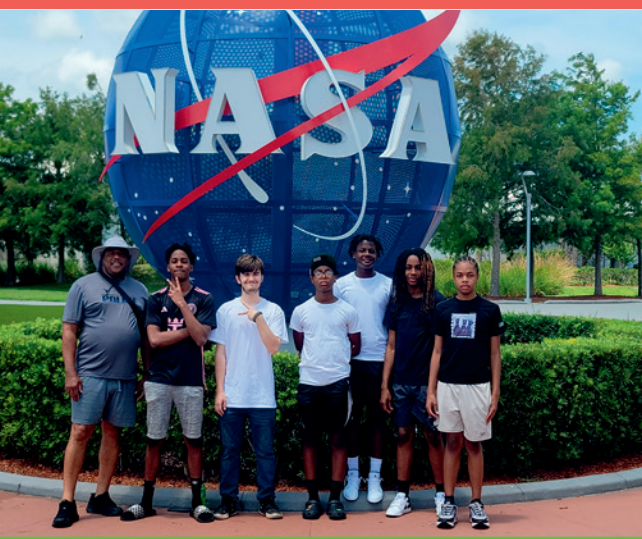
We have 53 years of institutional knowledge that we can share with our HUB community partners. We also know we can learn from those who already serve Ypsilanti residents and have earned the community's trust. Collaborating with and learning from our community partners has always enabled Peace to grow in ways we couldn't imagine on our own.

As we continue to grow Peace's Family Circle, we're extremely grateful for your continued investment in the work we do to help people change their lives. We couldn't do it without you.

With Gratitude,



Bonnie Billups, Jr.
Executive Director



Creative Learning Experiences

fostered deeper engagement & learning for Peace youth.

2024 was a year of exploration for Peace youth, parents, and families— through STEAM-themed experiential learning opportunities.

Creative science projects, local field trips, and two transformational road trips gave Peace youth the chance to explore how science, technology, engineering, art, and math play a role in our world— helping them develop new skills and widen their perspectives on what's possible. Learning through exploration, coupled with creative hands-on learning activities, promoted deeper engagement, critical thinking, and thoughtful conversations around the concepts youth learned. And the new learning approach also fostered greater curiosity, cooperation, and a sense of community through shared experiences that were also fun.

- ➔ **Middle school youth in Peace's Leadership Development Camp (LDC) learned about different inventions that were modeled after the natural world**—like how the front of bullet trains simulate a bird's beak. Through "Biomimicry" students re-created the concept themselves—designing their own bullet trains by molding "beaks" out of clay and attaching them to wooden cars to see which design led to the fastest train!
- ➔ **Two Transformational Road Trips to the Kennedy Space Center at Cape Canaveral and to Michigan's Upper Peninsula to tour the Soo Locks**, gave middle and high school boys the chance to explore Space, the Atlantic Ocean, and the Great Lakes—learning how science, engineering, and technology led to leaps in transportation.
- ➔ **Peace After-School and Summer Programs provided over a dozen STEAM-themed field trips throughout the year, including:**
 - Matthaei Botanical Gardens to learn about the fascinating world of plants;
 - Toledo's Imagination Station to experience the fun of science up close;
 - The Ann Arbor Wastewater Treatment Plant to learn about environmental issues and explore potential STEAM careers;
 - The EMU Planetarium to explore the stars; and
 - The Ann Arbor Art Fair to enjoy a wide variety of art forms & food!



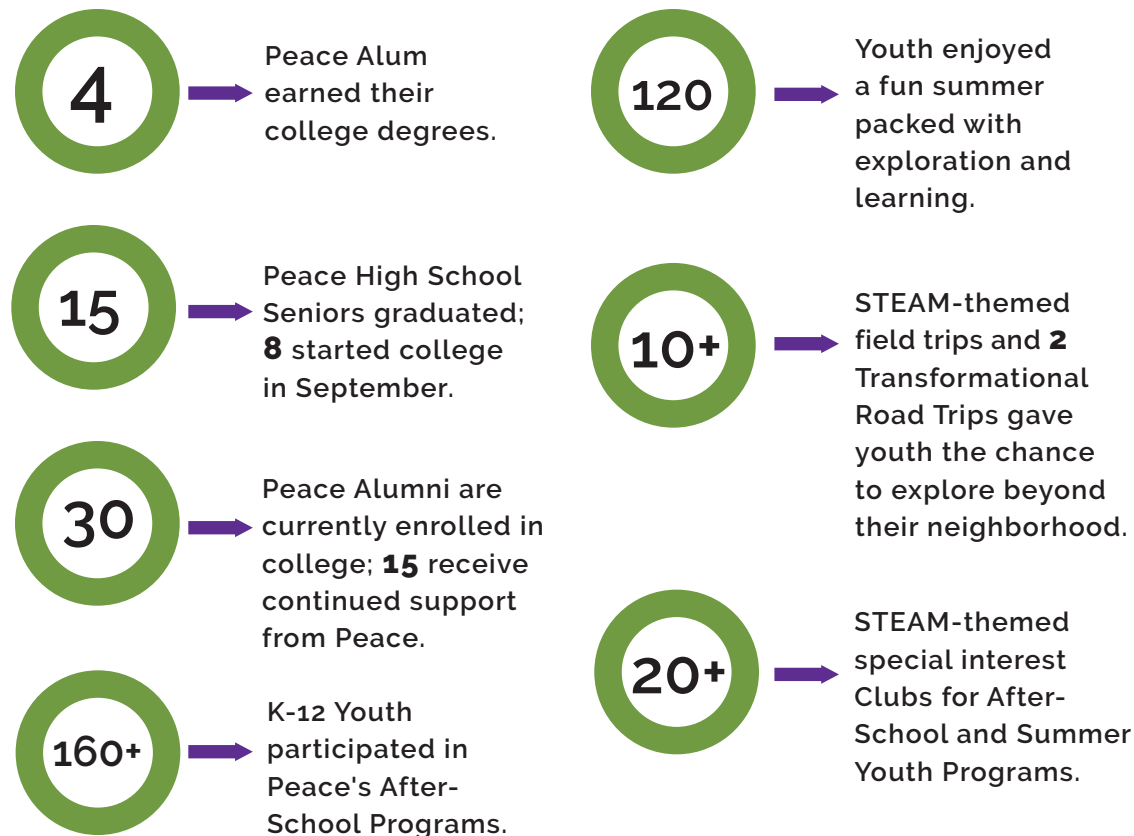
Last Spring, Alex Batalonga graduated from Central Michigan University (CMU) with a Bachelor of Business Administration, and double major in Marketing and Logistics. He is currently using his degree as a Supply Chain Coordinator at Penske Logistics.

Alex first started at Peace in high school, when his family moved to West Arbor. He credits Peace's College & Career Prep (CCP) Program "in making college possible for me." He notes, "We did a lot of SAT/ACT prep testing at Peace and Bonnie took us on college visits."

Though Alex had a packed schedule at Skyline between volunteering, sports, and homework—he always made time to come to Peace, "which was always there to accommodate my schedule. I'd come after practice or in between seasons. I even helped out with Summer Day Camp. I realized that just being in the Peace environment was so good for me."

Alex stayed connected to Peace throughout college, knowing Peace was just a phone call away if he needed anything—whether getting help with transportation to and from CMU or help covering his college expenses. "Bonnie and the Peace Staff made the college transition easier for me. I learned that by trusting in God, and having a positive community behind you, anything is possible."

2024 Youth Impact and Support



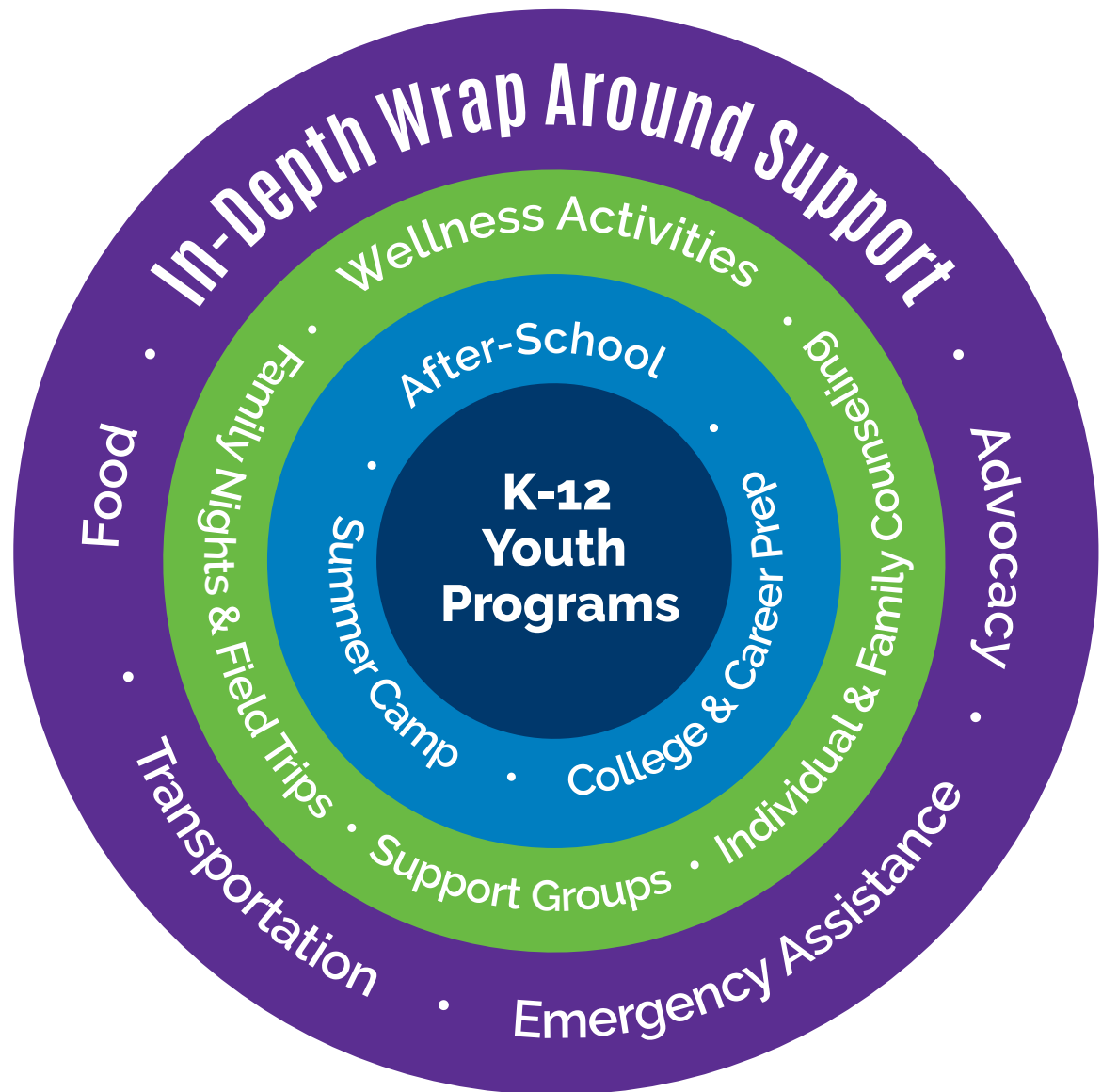
“Peace will always be there to push you forward in ways you need to be pushed. The door is always open. Even though I’m working now, I still feel a part of the Peace community. We can only do so much by ourselves, so it’s great to lean on a community that has your best interest at heart.”

— Alex Batalonga, Peace Alum
BBA, Central Michigan University



Supporting the Whole Family

through Family Enrichment, Wellness Programming
and additional Wraparound Support



Peace's Family Enrichment and Wellness Programs are essential components of the in-depth, 360° wraparound support Peace provides youth, parents, and families.

Both programs help strengthen families, and offer creative ways to help foster greater parent engagement at Peace, at school, and our wider community. Peace's Wellness Program provides multiple opportunities and ways for our youth, parents, and families to improve their mental, physical, emotional & spiritual health and well-being.

Last year, we expanded support groups for middle and high school youth, and continued to offer individual and family counseling for Peace parents, teens, and families.

- **Wellness Wednesdays** offer Peace parents a variety of activities— yoga, Zumba, self-defense, journaling, arts & craft activities, and more—that help them develop mindfulness, improve their self-care, and build resilience.
- **A Mom 2 Mom Support Group**, facilitated by one of Peace's licensed clinical social workers, offers Peace mothers a designated safe-space to share parenting challenges, advice, and perspectives, as well as learn from one another and special guests.
- **Individual and Family counseling support offers trauma-informed behavioral therapy** with a licensed clinical social worker at Peace—to help youth, parents, and families address the stress, trauma, and other challenges that impede their success.

The Family Enrichment Program introduced new opportunities for parents and their children to participate in shared experiences through family-centered activities:

- **Field trips** to the Ann Arbor Hands-On Museum, Ann Arbor District Library's Westgate Branch, the annual Festifools Parade, the apple orchard and more!
- **Bi-monthly Family Nights** feature a shared meal and a range of fun activities for families to enjoy. Family Nights also provide an important opportunity for Peace Staff to touch base with parents.

“ It's nice to hear other mothers' stories. I don't feel alone in my struggles . . . I like getting some great advice from other moms . . . [I've learned] how important having a community of mothers coming together and supporting each other is.”

— Insights shared by Peace's Mom 2 Mom Support Group Participants

Wraparound Support for Families





Expanding Peace's Impact & Footprint

to better serve Ypsilanti area residents where they live.

Over the last two years, Peace has been working with Quinn Evans Architects and Phoenix Contractors to completely transform and renovate a former church into a full service community center that is designed to provide Ypsilanti area residents easier and more equitable access to a range of programs and services.

The 8,000 square foot Peace HUB, located at 1515 South Harris Road in Ypsilanti Township, sits on 2.1 acres of open space and has all new interior spaces that include:

- A Welcome lobby with electronic signage to list HUB Program & Schedules;
- A "Healing" Community Space for weekly community meals, a bi-weekly Senior Cafe, and community events and meetings;
- A "Unifying" & "Building" Multi-purpose Program Space
- A Full Service Commercial Kitchen to support community meals and special events;
- A Full-Service Food Pantry that offers residents the opportunity to "shop" from a wide selection of pantry staples, protein, and fresh produce;
- Two Offices for Peace HUB Staff and nonprofit partners to use; and
- A Conference Room for small nonprofit and neighborhood meetings.

Peace maintains a small on-site staff at the HUB to coordinate all programs and services; oversee the HUB's Food Pantry and community meals; and connect residents to vital community resources through Case Management services. Peace is also partnering with a number of local agencies to provide a range of programs and support services that can offer the kind of in-depth wraparound support Peace provides in Ann Arbor.

Our initial HUB Coalition Partners who have pledged to work together to provide wraparound support for Ypsilanti area residents include:

- | | |
|--------------------------------|-----------------------|
| • Food Gatherers | • Educate Youth |
| • FedUp Food Ministries | • Mentor2Youth |
| • Habitat for Humanity | • Our Community Reads |
| • Community Family Life Center | • Friends in Deed |
| | • 2 Marines |

Additional community partners who have plans to provide programs at the HUB include: Michigan Works! Southeast Michigan (Workforce Development); Dawn Farm and Home of New Vision (Substance Abuse Recovery); Growing Hope; We-the-People Food Coop; Legal Aid Services, Corner Health and other local care providers.

Transformative Funding

to help develop the new Peace HUB Community Resource Center

In early 2024, Peace received two transformational grants:

- A \$2 million unrestricted grant from MacKenzie Scott's Yield Giving Open Call, and
- A \$ 700,000 Community Center Grant from the State of Michigan Department of Labor & Economic Opportunity (LEO).

Both grant awards were an important affirmation of Peace's impact in our community.

We also know from the feedback we received, that the longevity, diversity, and breadth of Peace's community support and partnerships—especially those who have supported the agency for over 20+ years—was instrumental in helping Peace secure these two meaningful investments.

We're incredibly grateful for the following funding partners and donors who helped Peace realize its vision for the new Peace HUB in Ypsilanti Township.



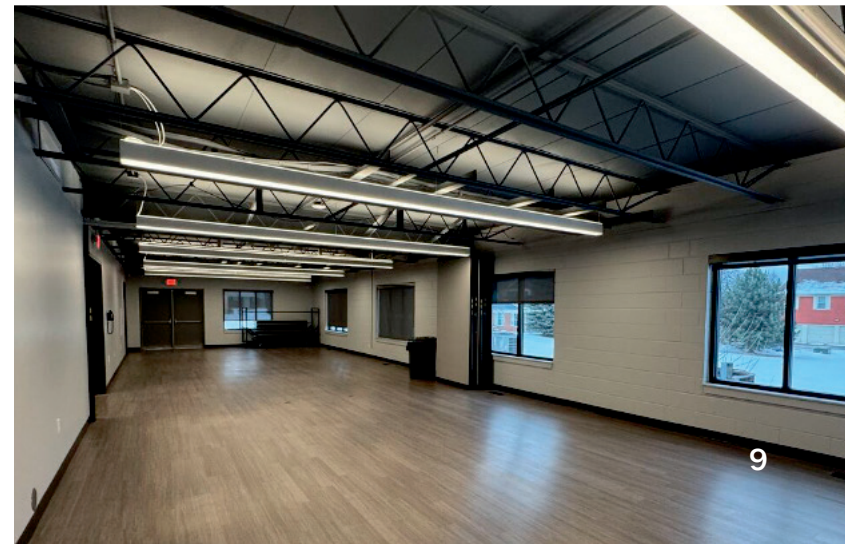
Jenkins Foundation
Sandy Garges & Jeff Kersten
Janet Kemink & Rodney Smith



Old National Bank
Absolute Title
Bank of Ann Arbor
Lineage Logistics

Northstar Bank
United Way of
Washtenaw County
Washtenaw County OCED

Ypsilanti Area Community Fund
Zingerman's Community
of Businesses



TRANSFORMATIVE GIVING

2024 Peace Financial Summary

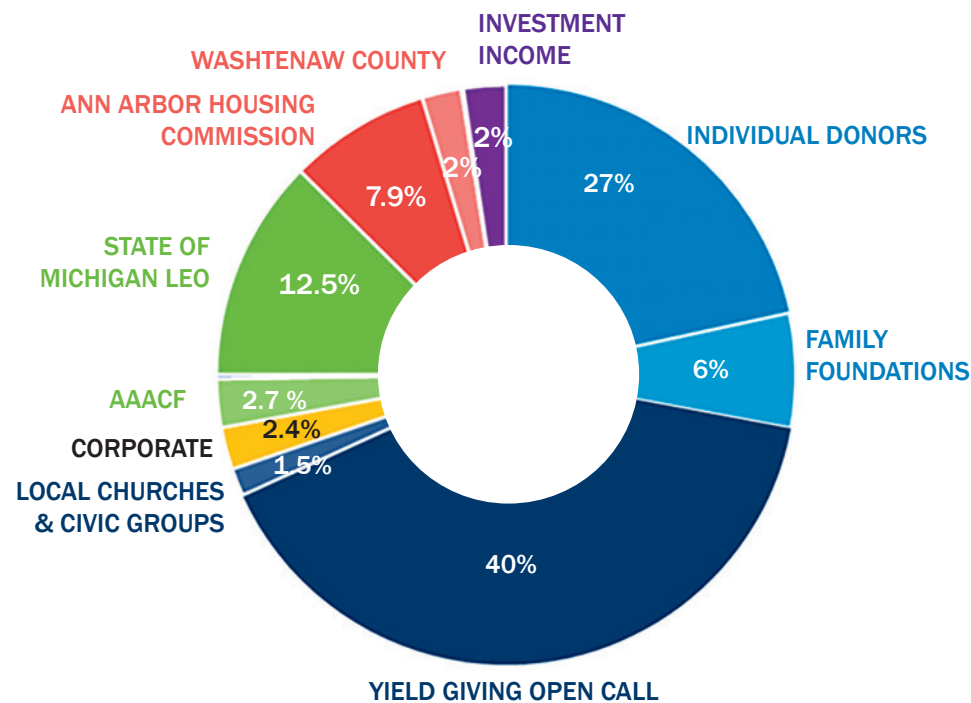
Our generous community of donors and funding partners invested nearly \$5 million to support Peace Neighborhood Center's mission and work — including our vision for the new HUB Community Resource Center.

Last year, Peace raised over 72% of its annual operating revenue from private sources: individual donors, family foundations, churches, civic groups, corporate and local businesses, and local funding partners. Your annual support made it possible for Peace to add new staff, sustain our core programming, and provide more in-depth wraparound support services for the youth, adults, and families we serve.

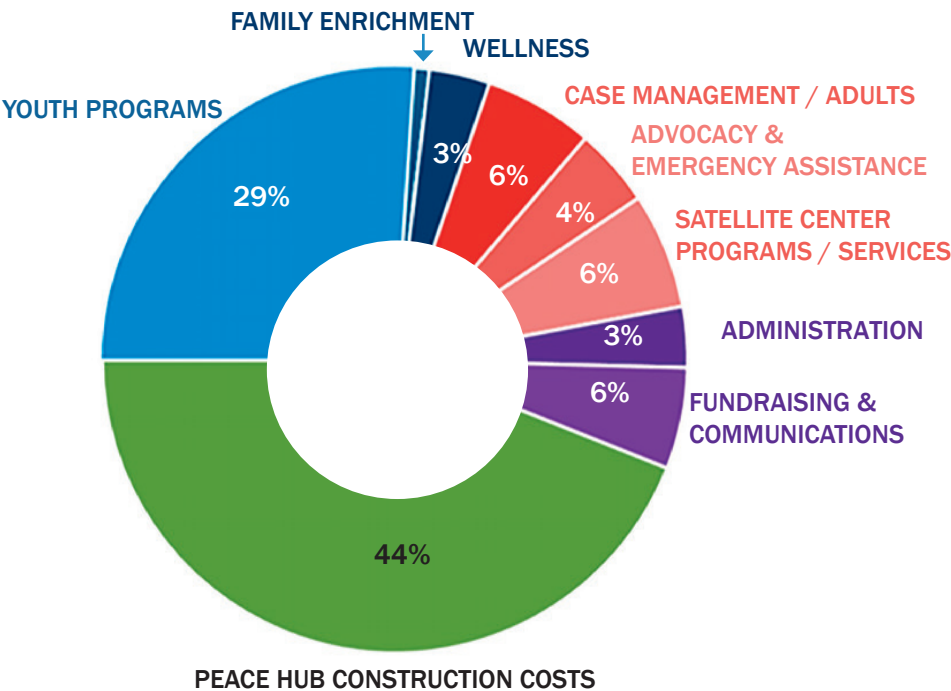
Public support from the Ann Arbor Housing Commission and Washtenaw County accounted for 21% of Peace's operating revenue—which covered critical case management services Peace provides at three public housing communities.

And in 2023-2024, Peace raised over \$2.4 million to cover 100% of the planning and construction costs for the new HUB Community Resource Center, which included two one-time transformational grant awards.

2024 FUNDING SUPPORT



2024 EXPENSES



SUPPORT AND REVENUE ⁽¹⁾		
Individual Contributions		\$ 1,072,088
Family / Private Foundations		\$ 315,510
Yield Giving Open Call (MacKenzie Scott)		\$ 2,000,000
Churches, Civic Groups, & Other Organizations		\$ 76,647
Corporate Support / Local Business		\$ 117,079
Ann Arbor Area Community Foundation		\$ 131,995
United Way for Southeast Michigan		\$ 12,813
State of Michigan (Labor & Economic Opportunity)		\$ 615,456
Ann Arbor Housing Commission		\$ 392,990
Washtenaw County OCED (CBDO/MRF)		\$ 108,500
Program Fees / Building Rental Fees		\$ 6,255
Investment Income		\$ 117,625
Total Support and Revenue		\$ 4,966,958 ⁽²⁾

EXPENSES ⁽¹⁾		
Youth After-School & Summer Programs		\$ 765,000
Family Enrichment		\$ 24,580
Wellness Programming		\$ 98,488
Case Management Services:		
Adult Services & Programs		\$ 178,000
Advocacy & Emergency Assistance		\$ 128,000
Satellite Centers		\$ 188,000
Administration		\$ 98,450
Fundraising		\$ 164,525
HUB Capital Improvements		\$ 1,291,883
Total Expenses		\$ 2,936,926

Change in Net Assets	\$ 2,030,032 ⁽³⁾
-----------------------------	------------------------------------

NOTES:

- 2024 Financials shown here are preliminary, and reflect unaudited figures prepared by an independent accounting firm that reconciles Peace's Chart of Accounts on a monthly basis. Audited Financials will be publicly available by June 30, 2024 —** upon final receipt and approval of Peace's annual independent audit. Peace's 2024 990 will also be made available on our website.
- 38% of the Total Support and Revenue Peace received in 2024 (\$1.9 million in gifts and grants) were designated for the new Peace HUB.** 2024 Revenue also included \$27,900 in 50th Anniversary Campaign Pledges.
- Change in Net Assets essentially reflects the \$2 million unrestricted grant Peace received from the Yield Giving Open Call.** Peace's Board approved \$ 1 million to cover part of the HUB's capital improvement costs; an estimated \$1 million in remaining construction payments will be paid in 2025. \$1 million of the Yield Grant has been allocated to continue to build the agency's operating reserves.

2024 PEACE BOARD OF DIRECTORS

Nicole Perry Banks, President *
Associate Dean, University of Michigan

Alan Mlynek, Vice President
*Senior VP, Solutions Architecture
Noodle (Technology Network)*

Steve Schlecht, Treasurer
*CFO & Executive Director of Administration,
University of Michigan LSA*

Kurt Schmerberg, Secretary
*Vice President and CFO,
A nity Valuation Group*

Bryan Johnson
*Senior Diversity, Equity & Inclusion
Consultant; Root Inc.*

Kate Markey, JD
*Doctoral Student , University of Michigan
Former Law Clerk, Michigan Supreme Court
Legal Services of
South Central Michigan, Inc.*

Talasha Moore, MA, CRC, LPC *
*Vocational Rehabilitation Counselor,
Veterans Bene ts Administration*

Kevin Murphy
*Partner and Wealth Advisor,
Legacy Wealth Partners*

Karen Sloan
Principal, Sloan HR Consulting

* Board Members who attended
Peace Youth Programs.

PEACE'S EXPANSIVE CIRCLES OF

Your collective generosity and continued annual support has been essential in helping Peace sustain vital programs and services that help over 800 households across Washtenaw County.

\$500,000 +

Yield Giving Open Call
State of Michigan Dept. of
Labor & Economic Opportunity (LEO)

\$100,000 - \$499,999

Anonymous Donor
Jenkins Foundation
Ann Arbor Area Community Foundation

\$50,000 — \$99,999

Two Anonymous Family Foundations
Domino's World Resource Center

\$20,000 — \$49,999

Anonymous Donor
Ann Arbor Thrift Shop
Tim & Robin Damschroder
James A. & Faith Knight Foundation
Stanley & Robin Mendenhall
Sarah Newman
Speckhard-Knight Charitable Foundation
The Pryor Foundation
Michael & Deborah Tirico
Eileen Weiser & Dick Caldarazzo,
and Daniel Weiser

\$10,000 — \$19,999

Eleanor Abrons
Martha Campbell
Steve & Judy Dobson
Joseph G. Harman
Ann & Brent Hollenbeck
Stacey & Mike Marsh
Michigan Works!
Southeast Michigan
Antoinette T. Morell & Tom Root
Alice & Hugh Morgan
Roy & Sue Muir
Allan Newman & Roddy Wares
Old National Trust Foundation
Melissa & Brett Pynnonen
Donald and Pat Roof
S. I. Company, LLC
Vivian Sangunett
Stephen Towers
United Way for Southeastern
Michigan
Marianne S. Westen

\$5,000 — \$9,999

Seven Anonymous Donors
Marcia Alter
Elizabeth & Royal Caswell
Jack & Jean DiGiuseppe
First Presbyterian Church
Sandra Garges & Jeff ey Kersten
Elise & John Gerich
Jason Given
Greater Beneficia Union -
District #630
Kiwanis Club of Ann Arbor
THE MOSAIC FOUNDATION
of Rita & Peter Heydon
Ann H. Neiswander
Mark & Margaret Pieroni
Rotary Club of Ann Arbor
Steven J. Schlecht
Susan M. Smith
Rodney Smith & Janet Kemink
Anne Stevens
Steven & Jaclynn Tracy
Trinity Lutheran Church
Trucent
Carol W. Weber
D. Louis Weir
Wendy Wellman
Zingerman's Community
of Businesses

COMMUNITY SUPPORT

\$2,000 — \$4,999

Anonymous Family Foundation
Ann Arbor Host Lions Club
Ann Arbor Social Capital Fund
Erik & Rebecca Bakker-Arkema
Bank of Ann Arbor, Inc.
Bethlehem United Church of Christ
Peyton Bland & Rebecca Spangler
Pamela Brandwein
Buhr Education, Arts & Community
Safety Fund at AAACF
Ken Ballard & Dale R. Carr
Paul & Patricia Carson
Drs. Christin Carter-Su & Eugene Su
John Cattier
Charles Reinhart Company, Realtors
Constance J. Cress
Andrea DeAgostino & James Smith
Kristine & John Denzin
Peter & Maren Dobson
GBU Financial Life
Heinz Grassl & Deanne E. Sovereign
Ann & Mike Green
Linda Haab
Jennifer & David Haines
Susan & John Haines
Kelly & Paul Harms
Sandra J. Harris
John E. Jackson
Cathleen & Valdemar Jaskiewicz
Tracy & Roger Jeanty
Chris & Sandra Jung
Donna Karvonen

Linda Korobkin
Michele L. Madden
Brian Maiville & Candice Burns
Martha McClatchey
Kevin & Tamar Murphy
Laurence & Mary Louise O'Connell
Kevin Patterson
Christy Perros & Tom Dewhirst
Amy & James Peters
Mary Jean Raab & John Boyer
Al Raymond
Katie & Bill Robertson
Jeff & Karen Rothstein
Bill Brinkerhoff & Kathy Sample
Patricia & Van Sandstrom
Kurt Schmerberg & Jane Nicholson
Lakshmi & Sanjay Shetty
Kit & Gary Steinaway
Peri Stone-Palmquist
Suzanne & Joe Upton
Jan Van Dijk & Marcia Luke-Van Dijk
Mary Vandewiele
Christine Veenstra
Timothy & Laurie Wadhams
Andrea & Kevin Webber
Virginia L. Weingate
Martha S. Weintraub &
Peter D. Smith Family Fund
Charles and Sandra Westrin
Marian Williams
Zion Lutheran Church
Zion Lutheran Church Women

\$1,000 — \$1,999

Abbot School PTO
Absolute Title Agency
Stacy & Brandon Ackley
Douglas Aikenhead & Tracy Gallup
Harvey & Mary Amoe
Ann Arbor Fraternity Lodge #262
Ann Arbor Public Schools
Robert L. Arthurs and Carol Watson
Katharine T. Babcock
James & Lisa Baker
William Bastow & Patricia A. Green
Molly Bazzani
Sheri Belcher & Todd Tribble
Frederick Blanck & Andree Joyaux
David & Carol Bradford
Marie & Mark Brazeau
Busch's
Mary Caldwell
Paul A. Callam & Lynn Gregory
Linda Campbell
DeLynn Carter & Chris Nelson
Pat & John Chapman
Carey & Jan Culbertson
Gwendolyn Davidge
Kay & Paul Davoux
Christina & Pete Deininger
Terrisca Desjardins & Satish Malnaik
Macdonald & Carolin Dick
Katie Dortch
Carol & David Downton
Christopher Fellin
Phillip & Phyllis Fellin
Esther M. Floyd
Nicole Frei



LIVING HISTORY MONUMENTS

In early September, the Ann Arbor Summer Festival, in partnership with the Ann Arbor District Library, hosted an outdoor public art installation that honored four community leaders who have made a long-term impact in our community — supporting diverse and marginalized communities.

Part of a year-long celebration of Ann Arbor's bicentennial, the nighttime installation at Wheeler Park featured monument-sized moving digital portraits projected on the park's trees. The community leaders featured have a combined 160 years of service:

- **Peace's Bonnie Billups, Jr.** for his 40+ years service to our community;
- **Joyce Hunter**, an educator and community advocate in the Ann Arbor Public Schools; and
- **Keith Orr and Martin Contreras** for creating safe and welcoming spaces for Ann Arbor's LGBTQ+ communities.

These community leaders' service reminds us that we can all work to create a future Ann Arbor that is welcoming to all.

OUR GENEROUS CIRCLE OF SUPPORT

\$1,000 — \$1,999

Jim & Sister Dori Gapczynski
 GBU Financial Life, District #630
 Rita Gelman
 Steven Glauberman &
 Margaret Schankler
 Kenneth Gottschlich
 Cheryl & Bob Grant
 Martha Buhr Grimes
 Mark & Brenda Gunderson
 HAIL! Impact, Inc.
 David Heffner &
 Diane Wagner-Heffner
 Robin Hescheles
 Randy & Peggy Holtzman
 Sarah Howard
 Linda Hubbard
 Lisa Ingall
 Mary Anne & Eric Jaeger
 The Jensen Foundation
 James S. Keller & Mary Ellen Hoy
 Lawton School PTO
 Legacy Wealth Partners
 Karen LeGassick &
 Leonard Wozniak
 Gregory N. Levine &
 Kristin Seefeldt
 John Lilley
 Christine A. Lord
 Kristin Lozon
 Elida M. Malila
 Cynthia Mallery
 Kate Markey
 Gino Martin
 Susanne & Todd McDevitt
 Jennifer McDonald
 Alan Mlynec & Emily Wark
 Patricia & Thomas Morrow
 Northstar Bank
 O'Neal Construction
 Katherine & Michael O'Rear
 Daniel Papajcik

Mary & Keith Phelps
 Retirement Income Solutions
 Dr. Pary L Reza
 Dr. Leonard &
 Dr. Virginia Rezmierski
 Joann M. Ronzio & James
 Hanselman
 Tara Ryan
 Amy Sample
 George Schlecht &
 the late Joyce Schlect
 Sue Schooner
 Annie & Collyer Smith
 Janet Smith
 James & Sallie Stadel
 Jon & Jan Strite
 Ann Surratt
 Dr. Jeanice Swift
 Debbie & Jim Talley
 Eileen Thacker
 Dave & Colleen Thurston
 Trott Law, P.C.
 Bill & Dusty Upton
 Suzanne Van Appledorn
 Dorinda VanKempen
 Don Vereen & Susan Collins
 Kathryn Warner & David Gilmore
 Washtenaw United Way
 Sheila & Dave Waterhouse
 Scott & Gail Weber
 Jane Ziesemer & Tom Ziesemer
 Zingerman's Deli

\$500 — \$999

Benjamin Ambrosino
 Sanam Arab
 Gaard & Ellen Arneson
 Anne Baird
 Sarah & Thomas Baird
 Gwendolyn L. Ball
 John V. Ballard &
 Elizabeth A. Lindsley
 David Ballou
 Nicole Perry Banks
 Joey Barker
 Richard & Margaret Barnich
 Betsy & John Baron
 Patricia L. Bauer
 Margaret Bayless
 Lisa & Tim Bell
 Linda & Karlan Bender
 Bonnie Billups, Jr.
 Beth Brenner Wallace &
 David Michael Wallace
 Robert & Jan Brimacombe
 Heidi & David Butz
 Jean Carlberg & Bunyan Bryant
 Richard Carter
 Peggy Cavanaugh & Doug Strong
 Richard & Sue Chase
 Kathleen Cho & Eric Fearon
 Melinda Colquitt
 Jennifer Conlin & Daniel Rivkin
 Christine Dailey
 Karen E. Danzeisen
 Dicken Elementary School
 Abigail Elias
 Sandra & Douglas Elser
 Elaine Ezekiel
 Phillip Fellin
 First Congregational Church
 Johnny L. Fitch
 Megan Flynn
 Aaron Fremuth
 Susan Froelich & Rick Ingram

Ann and William Furtwangler
 Emma Gallo-Chasanoff &
 David Fegley
 Ashish & Aparna Garg
 Heather Geisler
 Kevin & Brenda Gilligan
 Drs. Patricia & Stephen Green
 Daniel & Norma Green
 Rebecca P. Green & Gary Casper
 Jan & Talbot Hack
 Paul & Lee Harkaway
 Joan Harris & Ed Sarath
 Larry Hauptman & Linda Langmore
 Loris and Bruce Hiemstra
 Stephan Hogan
 Timothy & Shirley Hogan
 Robert & Paula Hotaling
 Martin & Susan Hurwitz
 Hylant Group
 Bryan & Janelle Johnson
 Robert Johnson
 Patti & Charles Judson
 Carolyn & Jim Knake
 Seth & Kathryn Kopald
 Carrie Leahy
 Julianne Leonard
 Kelly MacArthur
 Patricia & Lamont Manley
 David Martel & Patrick Francis
 Scott Matherly &
 Mary Beth Ronayne
 Catherine McCune
 Claire McMurtrie
 Eileen McMyler
 Ann R. Meredith
 Karen Meyer
 Alice Michael
 Elmo Morales
 Mary & Amir Mostaghim
 Amy Myers
 Sharon & Chuck Newman



\$500 — \$999

Jan Onder
Gloria & Patrick O'Neill
Kathryn Osterholzer
Helen Peters
Dr. Nyota Pieh
AJ Redmond
Jeff & Kristen Roberts
Alissa Ruelle
Doug Selby
Catherine Shaw
Clifford & Ingrid Sheldon
Karen & Jeff Ioan
Richard Soble & Barbara Kessler
Dan & Tracey Sonntag
Harmony S. Sponberg &
Mollie McDermott
Shannon Stewart
Max & Sondra Sue Supica
Crevon Tarrance
Stephen & Ellen Taylor
Domenico & Erin Telemaco
Joe Tobias
Tribble Painting Company
Ani & Brian Turner
Priya Varadan &
Sundu Brahmasandra
Tara Vigil
Susan & Michael Walters
Warby Parker
Charles Warpehoski &
Nancy Shore
Dave Waterhouse
Mary Russell Watkins
Doug & Sue Weber
Jann Wesolek
Richard Westbury
Timothy Wilhelm
Tom & Christie Wong Barrett
Steven & Katie Woodward
Lynn Wooten

\$250 — \$499

Joanne Alexander & Robert White
Marci & Bill Ammerman
James & Sue Anderson
Robert & Karen Anderson
Rae Ann Anderson-Weymouth
Mary E. Ardner
Sarah Argersinger
Dr. Thomas Atkins
Kenneth & Karen Aungst
Andrea Bare
Sue Barker
David & Tracy Barrett
Angela Benke
Greg Bergin
William & Olivia Birdsall
Robert & Sandra Birdsall
Daniel Bizer-Cox
Church World Service Inc.
Sandro Cinti & Billie Ochberg
Katie Conner
Ellie Cruze & Kevin Hart
Nancy & Steve Davis
Delta Kappa Gamma Society
International, Alpha Rho Chapter
Mike Dempsey
Audrey & Paul DiMarzo
Bill Dufek & Sheri R. Dufek
Gloria J. Edwards
Cary & Suzy Engleberg
Julie Feldkamp
Richard Field & Kathleen Hepler
Carol E. Fletcher
Jeff & Monica Forward
Gerald & Lynn Fouchey
Catherine Franklin
Zoltán-Gábor Géza
Joann & Tom Green
Laurie Greenberg
Mimi Harris
Katy & Woody Held

Liz Jackson
Mark Jacobson
Judy & Fred Jahnke
John Dow Industries
Judy M. Judd
Rachel Kaplan
Nora & Fred Karsch
Charles & Mary Louise Kellermann
Susan & Michael Kielb
Ronald Kramer
P. Gavin Larose & Stacy G. Mates
Terrance & Minoo Larson
Margaret A. Long & Lee Katterman
Michael & Meredith Lovelace
Andrea Maguire
Philip Maley
Jessica Marcus
Aislinn McDonald
Apostolos & Carol Michaelides
Timothy & Jennifer Miller
The Minister's Alliance of
Ypsilanti, Ann Arbor & Vicinity
Ann T. Mulhern
Maria Murphy & Donald Packard
Glenn Nelson & Margaret Dewar
Angela Newing
Suzanne Ohmit
Nondi Orazi & Terry Walsh
Susan Pachera
Lindsley Paine
Matt Perros
Eunice Phillips
Luseni Pieh
Robert & Mary Ann Pierce
Pledgeling Foundation
Patricia J. Pooley
Robin Queen
Darrell Randle
William & Betty Ratcliff
Renaissance Charitable Foundation

Jean M. Robinson
Susan Romano
Robert & Joan Rose
Lauren Salah
Ann & (the late) Tom Schriber
Schwaebischer Unterstuetzungs
Verein
Elaine Schweitzer
Audrey Seasholtz &
Robert Thompson
Drs. Linda Selwa & James Selwa
Nancy Shore
Pamela Sica
Pete & Carol Sickman-Garner
Lorri Sipes & Margaret Hostetler
Adele Sowinski
Suzanne & Matt Steward
Linda Stott
Melinda A. Stuber
Bagya Sundaram
John & Janet Talbot
Jane Talcott
Lauren Talley
Pat & Diane Tamblyn
Chris & Emily Trentacosta
Eliza Upton
Adit Vuppala
Dietmar Wagner
Deborah & Michael Weber
Ken & Mary Weber
Trisha Whitcomb
Thomas Wieder
Karen Williams
Stella & Pete Wixom
Patricia & John Zeichman





OUR GENEROUS CIRCLE OF SUPPORT

\$100 — \$249

Shellee Almquist & Lauren Hall
 Jeff ey A. Alson
 James & Sue Andersen
 James Angle & Jacqueline Deron
 Elaine & Ralph Anthony
 Brett Ashley
 Shauna A. Babcock &
 Gary Snyderman
 Jenna Bacolor
 Kathleen A. Baines
 Lynn Baldwin
 Pat Bantle
 Ruth Bardenstein & Jim Roll
 Anne Barratt-Fornell &
 Claes Fornell
 Soumi Basu & Prerak Shah
 Barbara Behnke
 Robert & Emma Boley
 Shelley & Gary Bruder
 Mary Ann Buckley
 Amy Buege
 Mary & Richard Burney
 Adrienne Burroughs
 Mary Ellen & Robert Cain
 Paul & Susan Campbell
 Lorin Cartwright
 Elaine Chottiner
 Julie Christofferson
 Geralyn & Daniel Cogan
 Dr. Frank Colligan &
 Judith Colligan
 Andrea Cooper
 Judith Coucouvanis
 John Cowman & Denise Mahoney
 William Crawford &
 Elizabeth Silver
 Robert Crenshaw, Jr. &
 Bennie Crenshaw
 Sharon & Michael Darga
 Jeanine DeLay

Lisa Dempsey
 Sue C. Dempsey
 Joyce & Michael Deren
 Lisa Disch
 Peter & Grace Duren
 Geoff ey H. Eley &
 Regina Morantz-Sanchez
 Phillis Engelbert
 Cheryl Ervin
 Ellis Exton
 Kathleen Faller
 Mark Fancher & Lorray Brown
 James Fash
 Sonja Felton
 Sally Fink
 Ira Fisher
 Bryce Frohlich
 Melissa Fuller & Adam Acito
 Francelle & Kevin Fulton
 Virginia Gajar
 Christine & Eric Gajar
 Celia & Paul Gargaro
 Elaine Gazda & James McIntosh
 Marvin & Florence Gerber
 George & Mary Gilligan
 Melanie Grabarkiewicz
 Joan Grissing
 Marcia Haddox
 Sharon Hamilton
 Martha L. Hannah &
 Thomas Strait
 William Harris
 Kathryn F Hartung
 Pamela J. Hayes
 Jane Heirich
 Eric & Deb Helber
 Carolyn Helmke
 Norman & Deborah Herbert
 Susan & Joel Hickey
 Christina & James Hicks

Dave Hill
 Brenda Hill
 Wendy & Steve Hiller
 Seema Hirsch
 Charles Holmes
 Kenneth & Carol Hovey
 Gail Hubbard
 Tania James
 Mary Janevic
 Jane & Owen Jansson
 William & Joan Jaynes
 Mary R. Johnson
 Kathryn Jones
 Harvey & Deborah Juster
 Janet Kahan
 Leslie Kamil
 Larry & Carole Katz
 Sarah & Dean Keith
 Gail Kelsey & William Hill
 Stephen & Judy Kesler
 Cheryl Kessler
 Mabelle C. Kirk
 Elizabeth Kolb
 Gay F. Konschuh
 Mariana K opacz
 Grace Helms Kotre & J. David Kotre
 Ruth Kraut
 Jennifer & Rob Kunec
 Myra Larson
 Heidi Lassaline
 Thomas Lee
 Rachel & Herbert Aaron Levy
 Georgia Lindstrom
 Wayne Lindstrom
 Lois & William Lovejoy
 Christina MacKellar
 Nancy Margolis
 Mara E. Markovs
 Kathryn Marx
 Griff & Patricia McDonald

Miriam Meisler
 John Melangton
 Doris A. Melvin
 Stephanie Mercier
 Joyce & David Meyer
 Ben Michelson
 Carmen Miller
 Markell Miller
 Michael C. Moran
 Sara Morrison
 Michael Munson
 Lakshmi Narayanan
 Rachel Newman & Yossef Zekic
 Kristen Nyht
 Mark O'Boyle
 Constance K. Olson
 Chet & Carole Pawloski
 Jillian Pearing
 Beth & Richard Pearson
 Janet & Steven Popper
 Diana & William Pratt
 Thomas & Gladys Pressley
 Gregory Clay Ramsay
 Susan Rasmussen
 Margaret Raucher
 Marianne & Hans Rauer
 Reau & Associates, PC
 RelaxStation LTD
 Bradey Resulta
 Patricia & Dennis Ritchie
 Megan Rodgers & Julie Crichton
 Amy Roehrig
 Ana C. Rojas
 Hazel & Josephine Rood
 Diane Rosenblum
 Ann Routt
 Katherine & Jim Rowan
 James Schaafsma
 Roberta Schaefer

\$100 — \$249

Dave Schatz
 Susan Schmidt
 Mark Schneyer & Debbie Field
 Katharene & Daniel Schoof
 Glenn Krebs &
 Nancy Schultheis-Krebs
 Joanna & Michael Semansk e
 Violet M. Shaffer
 Bruce & Lisa Shapiro
 Pamela Sidney
 Jimmy Simonte
 John & Margaret Sivertson
 Donald & Rhonda Sizemore
 Margaret Somers
 Carol & Robert Spaly
 Sarah Spenser
 Spiritual Assembly of the
 Baha'is of Ann Arbor
 Patricia St. Lawrence
 Rita & Sheldon Stark
 Michael & Barbara Steer
 Kathryn Steinaway
 Raymond & Alena Stocking
 Cathy & Rob Stone
 Nancy H. Strong
 Alan & Gail Sugar
 Marilyn Taylor
 Hitomi Tonomura
 Anne Upton
 Eric & Mari Veenstra
 Mona L. Walz
 Angela Watson
 Mark White
 Dr. Mark R. Wilson & Jane Wilson
 Noel Ann & Christopher Winkler
 Rosemarie & Robert Wywrot
 Xi Alpha Omicron
 Angela Yang
 Chuck Kieffer & Marjorie Ziefert
 Beth Ziobro & Jennifer Sieracki

Dr. David Seaman &
 Dr. Helen Zylman

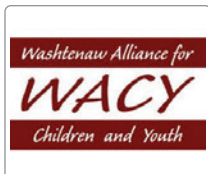
\$10 — \$99

Jessica Antanaitis
 Jim & Martha Balmer
 Peggy Barry
 Susan Bartman
 Mariah Bauman
 Bob White Realty Company
 Ann Brennan
 Carol Sue Brodbeck
 Ronnie G. Bruce
 Judith Calhoun
 Lisa Carn
 Judith Cawhorn
 Carol Chase
 Jane Coffey
 Charles & Bonnie Crooks
 James Crowfoot & Ruth Carey
 Rocco DePietro
 Linda & Michael Dibble
 Paul & Annemarie Dolan
 Matthew Dull
 Barbee & Jeffrey Duncan
 Catherine Dyer
 Joseph Eisman
 Scott Ellis
 Sally Fekety
 Judith R. Francis
 Charles J. Frenzel
 Albert & Karen Gallup
 Kristin Gapske
 Terrol Graham
 Emily Gutmann
 Roger & Helen Harms
 Mr. & Mrs. William L. Harris
 Carolyn J. Hastings
 Sarah Haynes
 Healing Hands
 Deborah Heaney
 John & Martha Hicks
 Robyn Hughes
 Aaron Hula

Joyce Hunter
 Sarah Jaworowski
 Peter & Patricia Jessup
 DiOnna Jordan
 Ellen R. Katz
 MaryBeth Kern-Collins
 Linda King
 Mark Knox & Sheryl Cormicle Knox
 Tracy Kramer
 Kevin Lill & Dawn Salo
 Conrad Macina
 David & Donna Meyer
 Susan Miller & Allen Batteau
 Jim & the late Jo Mitchell
 Susan T. Mlynek
 Morpho Fund
 Rashid Neighbors
 Network for Good
 Nancy Oestrike
 P. Lamont & Joann Okey
 Dorothy & Donald Peacor
 Jeffrey & Joanna Post
 Paul D. Reingold & Julie Bedore
 Cedric & Mori Richner
 Gay Ellen Rotrock
 Richard & Clare Sansburn
 Dianne & Peter Santinga
 David & Karyn Schoem
 Corey Seeman
 Maureen Tyra
 Mary Nehra Waldo
 Erick White
 Robert White
 Ellen Wisniewski
 Tiffany R. Zimmerman



OUR VALUED COMMUNITY AND FUNDING PARTNERS



Special thanks to Peace's Circle of Community Partners who provide funding support, special services, in-kind and program support, and volunteers to help Peace deliver the agency's programs, services, and wraparound support.



Food Gatherers has been an essential community partner to Peace since 1988 — providing much-needed food assistance to support the meals

Peace provides with every program, daily lunches at Baker Commons, and weekly food distribution.

Alleviating hunger has always been an important part of the 360° wrap-around support Peace provides families. We know from experience that it's hard to engage young people in learning, or help families address other important issues, if they're hungry. We also believe that taking time for shared meals not only alleviates hunger—but also fosters positive engagement, important connections and a sense of community, and mutual trust.

Since 1996, Food Gatherers' direct food support and purchasing credits have enabled Peace to reduce the agency's out-of-pocket annual expenditures for food by at least 50%.

During COVID, Peace was able to count on FG's support to expand food assistance to serve more families as food insecurity grew exponentially.

Today, Food Gatherers not only supports Peace's food programs at our main facility and Baker Commons—but also provides critical support for the new Peace HUB's Food Pantry. Already, 100+ Ypsilanti area households have "shopped" for their families from a wide selection of pantry staples, fresh produce, and protein.



The Ann Arbor Area Community Foundation has been a valued funding partner to Peace since 2001.

AAACF's Youth Council, African American Endowment Fund, and two Giving Circles have funded a number of programs and new initiatives at Peace, including our College & Career Prep Program, Peace's 50th Anniversary Campaign, and more recently, counseling support for teens through our Wellness Program.

This past year, AAACF provided critical funding to support the new HUB Community Resource Center and the HUB's Senior Programs. It's also important to note that AAACF holds three Endowment Funds that benefit Peace — two established by long-time donors. Collectively, those funds currently generate over \$54,000 in annual operating support for Peace, which will continue to grow in perpetuity.



Domino's Worldwide provided generous corporate support to help build out the new HUB Community Resource Center's Commercial Kitchen and Food Pantry. Over the last two years, Domino's has also provided generous annual support to sponsor Peace's annual Thanks for Giving event. And last summer, a group of Domino's Worldwide Tech employees built new bicycles for Peace kids!

- Abbot School PTO
- Absolute Title, Inc.
- Ann Arbor Chapter of Links
- Ann Arbor Host Lions Club
- Anna's Kindness
- Argus Farm Stop
- Bethel AME Church
- Bethlehem United Church of Christ
- Bodman Law LLC
- Comcast's Lift Zone
- Charles Reinhart Company, Realtors
- Delta Kappa Gamma, Alpha Rho Chapter
- Delta Sigma Theta Sorority Ann Arbor, Alumnae Chapter
- Dicken School PTO
- The Discovery Center
- Eastern Michigan University School of Social Work
- Elmo's Liberty Street T-Shirts
- First Presbyterian Church
- First Unitarian Universalist Church
- Forsythe Middle School
- GBU Financial Life, District #630
- Kiwanis Club of Ann Arbor
- Kroger Co, Plymouth Road Store
- LaFontaine Buick GMC
- Lawton School PTO
- Logan Elementary Student Council
- New Beginnings Community Church of Washtenaw County
- Produce Station
- Reau & Associates, PC
- Rotary Club of Ann Arbor
- Rozettes by Reklove
- Schwaebischer Unterstuetzungs Verein
- Slauson Middle School
- Spiritual Assembly of the Baha'is of Ann Arbor
- Spotlight Homes
- St. Clare's Episcopal Church
- Telluride Association
- Treasuring Christ Church
- Tribble Painting Company
- UA Local 190 - Plumbers & Pipefitters
- University of Michigan Medicine - Community Health Services
- University of Michigan Medical Students
- University of Michigan School of Social Work
- Washtenaw Intermediate School District

PEACE NEIGHBORHOOD CENTER STAFF 2024 - 2025

Bonnie Billups, Jr., Liv.Ed.*
Executive Director

Bernice Hardman, LMSW **
Director of Wellness and Family Enrichment Programs

MaryAnn Johnson, LMSW **
Licensed Clinical Social Worker

Raven Vawters, LLMSW *
Youth Programs Director

Anabel Cruz, LLMSSW *
Maple Meadows Case Manager and Volunteer Coordinator

NaTiyah Hugan *
West Arbor Program Coordinator

Adriana Jarrett, BA
Middle School Programs Manager

Mackenzie Grissom, BSW
REACH Program Manager

Oona Young, BBA, MSHROD *
College & Career Prep Manager

Dwight Johnson
College & Career Prep Program Assistant

Victor Parker *
Youth Program Specialist

Elanda Curry, BSW *
Case Manager

Kelly Martin, BSW *
Case Manager, Baker Commons

DeShara McKinney, LMSW
Case Manager, Baker Commons

Michael Bennett, MSW
Case Manager, Baker Commons

Ja'Kya Hugen *
Youth Program Specialist

DiOnna Jordan, BA
Director's Administrative Assistant

Ella Olive
Office / Finance Manager

Cornelius Olive, Liv.Ed.
Building Maintenance Supervisor

John Ulmer, Liv.Ed
Transportation

Jeremiah Young *
Data Base & I.T. Specialist

LaKesha Williams, BSW
HUB Program & Facilities Manager

Adnan Soby, BSW
Case Manager, HUB

Latricia Juide *
Peace & HUB Food Manager

Dawn Dameron *
Kitchen Manager

Keira Overstreet *
Kitchen Assistant

Suzanne Upton, BA, MBA
Director, Major Gifts & Foundations

Kevin Lill, BA
Special Development Projects

Maya Krugman, BA
Marketing & Communications Manager

* Staff who attended Peace Youth programs

** Staff who served as Peace MSW Interns.



OUR VISION

A community where personal growth, opportunity and diversity are constant; the cycle of poverty and social & economic inequality has been broken.

OUR MISSION

To provide programs for children, families, and individuals who are affected by social and economic problems—to help them discover options, enhance skills, and make choices that lead to self-sufficiency and positive community involvement.



Stay connected to learn and see how we continue to seed transformational growth at Peace.



@peaceneighborhoodcenter



@peacencenter



Peace Neighborhood Center



1111 North Maple Road,
Ann Arbor, MI 48103
(734) 662-3564
peaceneighborhoodcenter.org

TO GIVE

