

Community. Connections. Inspiring. Hope.



2021 ANNUAL REPORT





“If everybody had a place like this, the world would be an amazing place.”

— Robert “Poppy” Turner
Peace Alumni, October, 2021



“Words cannot express the amount of gratitude I have for all the support you have provided us over the years—from financial assistance at Christmas when I was at one of life’s lowest points, to helping get a camp scholarship, getting the kids interested in gardening and music, and just listening to me vent when everything felt like it was falling apart again during covid lockdowns.



There are just so many positive memories and moments that you have added to our lives. Thank you for becoming another family that we didn’t know we needed in our life. We are so very grateful for everything you have done for us, and continue to do for the community.”

— Peace Parent
January, 2022



DEAR PEACE FAMILY —

2021 was a special year for Peace, even as the pandemic continued to present extraordinary challenges and uncertainty for our families.

We celebrated a number of accomplishments, important moments, and a very special milestone last year. All made possible by the unwavering commitment our staff, volunteers, community partners, and donors make to Peace each year. Your continuing support helps plant the seeds for a positive and more hopeful future for our organization—and for the young people and families we serve.

Peace's 50th Anniversary gave us the chance to connect with people from all corners of our big diverse Peace Family—including Peace Alumni from across the country, our community partners, long-time volunteers and donors, and even a few neighbors who were there at the start. I will be forever grateful to all those who shared their stories and for the incredible outpouring of support we received for our 50th Campaign. Your generosity helps ensure a more secure financial future for Peace, making it possible for us to sustain important programs and invest in new initiatives.

With a 50-year track record of helping people change their lives, I'm often asked what the keys are to Peace Neighborhood's long-term success—how others could replicate what we do here and bring it to other communities.

When reflecting on all that we seek to provide here at Peace, I often share three essential ingredients to building a successful community center:

A safe place that builds community and important connections with the surrounding neighborhood and the people we serve. At Peace it's important that each and every person who walks through our front door, no matter their story or struggles, feels welcomed and genuinely cared for—with kindness, understanding, dignity, and mutual respect.

Equitable access to resources, tools, and the opportunities that people need to be able to move forward toward their goals. We don't do it alone. We partner with a number of community groups and organizations that help us provide a range of wraparound support. It does take a village.

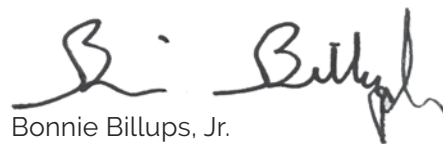
Proven programs and services that are specifically designed to meet our kids' and families' needs—and help them break intergenerational cycles of poverty. Since 1971, Peace has continually adjusted our programs and invested in new initiatives to meet changing needs. We build upon what we know works and collaborate with others to leverage expertise and resources.

At Peace Neighborhood Center, we plant seeds for growth and change.

We might not see the full harvest or transformational change overnight. It takes patience, consistency, steady guidance, accountability, an unwavering commitment to the people we serve, and a whole lot of love. We never tire of watching those seeds blossom—especially when we get to see Peace kids grow up and find fulfilling careers where they get to pay it forward by helping others.

We still have work to do. And we still need you. Your continuing investment in Peace Neighborhood Center enables us to not only invest in new initiatives, but also to sustain those programs we know work. I do believe that together, we can help people change the trajectory of their lives and break cycles of poverty—for future generations and for our entire community.

Peace and Blessings,



Bonnie Billups, Jr.

Peace Neighborhood Center Executive Director

Photo courtesy of MLive

Building Community, Bridges, & Life-long Connections

Since 1971 Peace has provided a safe and friendly space that fosters community and special connections with our neighbors and our larger community. Our extended Peace Family not only includes the young people, adults, and families we currently serve—but also a wide and diverse community of Peace alumni, staff, volunteers, donors, local educators, professionals, businesses and community partners. All of you play an important role in supporting the positive connections, relationships, and learning experiences our kids and parents have at Peace. All plant important seeds for future growth and possibilities. The kind that helps break cycles of poverty.



2021 COMMUNITY CONNECTIONS

- 10,300** **Shared meals and snacks served from Peace's kitchen throughout the year.**
From Rose Martin's early spaghetti dinners, providing a nutritional meal has always been an important part of youth programs, family nights, and special celebrations that bring our extended Peace Family and community together. It's also essential in making sure people receive basic sustenance. Today, nutritious meals and snacks continue to be an essential component of Peace programs and activities—from After-School Programs and Family Nights to Saturday morning support groups and field trips.
- 410** **Parents, guardians, and their children participated in Peace Family Nights.**
Last year's themes included making Valentines, learning about Black History, literacy during March reading month—as well as our annual Summer Camp celebration and a special Thanksgiving dinner.
- 170** **Local educators, professionals, musicians, teaching artists, volunteer tutors, and community partners connected with Peace kids and their families throughout the year to offer special learning experiences.**
- 50+** **Peace alumni, staff, and long-time volunteers shared their stories and perspectives to highlight the impact Peace has had in helping to change people's lives as part of Peace's 50th Anniversary Celebration.**
- 200+** **Members of our Peace Family—alumni, staff, long-time volunteers and donors, and community partners—gathered at Peace Neighborhood Center last June to celebrate our 50th Anniversary.** A special thank you to Satchel's Barbecue, Rose Saxton for her homemade birthday cupcakes, and local artist David Zinn for his fun sidewalk chalk friends.



A Bridge between Home & School

When schools moved back to in-person learning last Spring, Peace Staff mobilized a few cheering squads to surprise our youngest kids at local bus stops. All to offer encouragement and extra support as they boarded the bus to head to school for the first time since the pandemic started.



Life-long Connections

When Ruhi was in elementary school, she met with Katherine Selwa every week to get help with her homework, math, and reading. Katherine tutored Ruhi for four years before moving to Boston for college. Currently a sophomore at Grand Valley State, Ruhi still keeps in touch with her Peace tutor—who is now a Neurology Resident at Michigan Medicine and someone Ruhi continues to look to as both a mentor and friend.



Building Community Around Literacy

Last Spring, Peace partnered with Abbott, Dicken, Haisley, and Lawton Elementary Schools to host a virtual Peace Family Night. We cooked and delivered over 50 meals to families' homes complete with special literacy supplies. Building Literacy Experts and Title I teachers from each school joined our Peace community online in Zoom break-out sessions to play fun literacy games with parents and their young children.

From special game nights and enrichment activities to our annual Thanksgiving dinner, Peace Family Nights are an important way to build community, incorporate fun learning opportunities, and foster meaningful connections for our families and their children.



Celebrating Important Milestones

To ensure a shy 5th grade student could participate in her drive-thru graduation ceremony at Dicken Elementary School, Peace decorated one of our mini vans and escorted Ennocence and her father to her first graduation! It was also the very first graduation ceremony that her father has been able to attend.

“

One of the things I appreciate most about Peace is how they bridge the gap that can sometimes be there between schools and families . . . When families see us here in a safe, friendly space, I think that makes them more likely to feel comfortable talking with us at school. And it also, I hope, gives the message that we're all a team . . . and our end goal is for their child to have the best experience and education they can.”

— Colleen McAlinden
Title I Teacher, Abbott Elementary School

Access to Resources & Special Opportunities

Each year, Peace Neighborhood Center provides a comprehensive range of programs and wraparound support to ensure our youth, adults, and families have access to the resources, assistance, and opportunities they need to be able to learn, work, heal, and achieve the goals they have set for themselves. In 2021, Peace helped over 350 people address a variety of challenges, stress, and uncertainty associated with the pandemic.



2021 IMPACT

125

Peace kids attended our 2021 Summer Youth Programs where they had the chance to explore new interests, ideas, and places—and make new friendships. Educational workshops, special interest clubs, local field trips, and conversations with local professionals offered Peace youth valuable learning opportunities that plant seeds for future possibilities.

146

Elementary, middle, and high school students received individualized academic support throughout the school year and participated in a variety of enrichment activities and workshops.

4

Peace high school graduates started college in September. Currently, 24 Peace youth attend college. Our College & Career Prep program provides continuing support throughout college that includes: a quiet study space at Peace when they're home, periodic check-ins, care packages, transportation to and from school, and special assistance to cover books and incidental living expenses not covered by scholarships.

WRAPAROUND SUPPORT

165

Adults received individualized case management services, advocacy, and support to connect them to resources and vital opportunities.

98

Young people, parents, and adults participated in support groups at Peace, giving them a chance to meaningfully connect with others, and share their stories and concerns:

- Two Saturday Groups: Rising Sons for boys and STARS (*Sisters Together Achieving Real Success*) for girls;
- "Talk About it Thursdays" for Peace Parents; and
- Weekly substance abuse meetings for adults in recovery.

\$37,203

In financial assistance and emergency aid helped households across Washtenaw County cover rent, utilities, car repairs, health related expenses, and other unexpected bills. Peace provides an essential safety-net for families who live near or below the poverty line.

348

Households received special food assistance: school lunch deliveries during remote learning, fresh produce at Peace's weekly food distributions, turkeys at Thanksgiving, and grocery gift cards to ensure Peace families had enough food on their table.



Individual Academic Support

In September, we pivoted back to Peace's traditional After-School programming for elementary, middle and high school students. We were especially grateful to be able to welcome back volunteer tutors who help students with homework and special learning challenges.



Transformational Experiences

Last Summer, Peace middle school student Zaron traveled to Europe to reconnect with a Dutch classmate he befriended in elementary school and protected from bullies. Understandably worried about letting her young son travel alone, Peace helped alleviate Zaron's mom's concerns and gave Zaron spending money to be able to bring home a few gifts for his family.

“

The younger kids that I've tutored are so happy to sit with an adult at the end of the day . . . It's just a given that this is a safe place, that this is a happy place, that this is a place where [kids] are going to get a snack and see their friends . . . It doesn't matter how long my day has been, when I leave after tutoring, my heart is so light. There's no way you can get that feeling anywhere else.”

— Mary Louise O'Connell
Volunteer Tutor



Camp Scholarships

Twenty Peace kids received scholarships to attend overnight camps in Michigan through our partnership with Washtenaw Camp Placement. Peace helped kids get ready and covered camp supplies. For some, it was the first time they've traveled away from home without family—an opportunity for kids to spread their wings, explore new places, and discover their strengths.



Educational Experiences

Middle school students in Peace's Leadership Development Camp had the chance to connect with local professionals, role models, and community partners to explore a range of topics, including: potential career paths with Google, a workshop on adolescent health and consent with the Corner Health Center, and a discussion about the legal and justice systems with Washtenaw County District Judge Miriam Perry.

“

I feel like there were a lot of people here that I could look up to. I saw a lot of people who looked like me who were successful. . . . I always knew I wanted to go to school and that I wanted to be a nurse. Having the support that I had here [at Peace] made me feel confident that I could excel because I could get the resources I needed.”

— Teriana
Peace Alum, Nurse Practitioner



Proven Programs

YOUTH PROGRAMS // STRENGTHENING EARLY LITERACY

Peace's Youth Programs have always been central to our mission to create self-sufficient and positive community leaders. Peace offers young people a continuum of support throughout their growth and development—through an integrated range of age-appropriate programming. Individualized academic support, family literacy activities, nutritional meals, enrichment experiences, social connections, and vital emotional support are all part of the portfolio of services we provide youth from elementary school to their high school graduation, with continued support through college. Peace helps young people find their greatness—with the expectation that they will set their own goals, work hard, and continue to learn to build a path forward toward college or trade school and a fulfilling career.

SUMMER CAMPS // TRANSFORMATIONAL ROAD TRIPS

Peace's Summer Youth Programs provide a safe place for kids to learn, play, and explore beyond their neighborhood—connecting them to opportunities they otherwise would not have access to. Our summer camps provide different experiences targeted to elementary and middle school youth. A special Ninth Grade Academy helps students prepare for and successfully transition to high school. An important right of passage for Peace youth is the opportunity to become Counselors-in-Training and ultimately work at Peace during the summer. A select group of older youth also earn a spot to participate in transformational road trips, where they get the chance to travel across the country to tour college campuses and visit historical civil rights sites and museums, national parks, and other points of interest. Beyond fun, these road trips offer young people valuable learning experiences that have a lasting impact in helping to shape their identity and future.

FAMILY ENRICHMENT PROGRAMMING

We learned a long time ago that in order for Peace to help a young person break the cycle of poverty, we need to engage their whole family. Our Family Enrichment Program offers family-centered activities, support groups, skills workshops, and vital support to help parents address a range of issues. Parents with children who are enrolled in Peace's After-School Programs are required to participate.

WRAPAROUND SUPPORT

Peace offers a range of individualized case management services and wraparound support that include: advocacy, food, transitional housing, counseling and support groups, and emergency assistance to cover unexpected expenses. All to help those who live near or below the poverty line manage extraordinary challenges and stressors, which have been exacerbated during the pandemic.

Investing in New Initiatives

A New Family Wellness Program at Peace

Peace Staff have been designing a new integrated wellness program that takes a holistic approach to helping our families improve their **health and well-being**. The program aims to provide tools, connections, and supports for Peace families by integrating mental, physical, emotional and spiritual wellness practices that help cultivate personal growth & build resiliency.

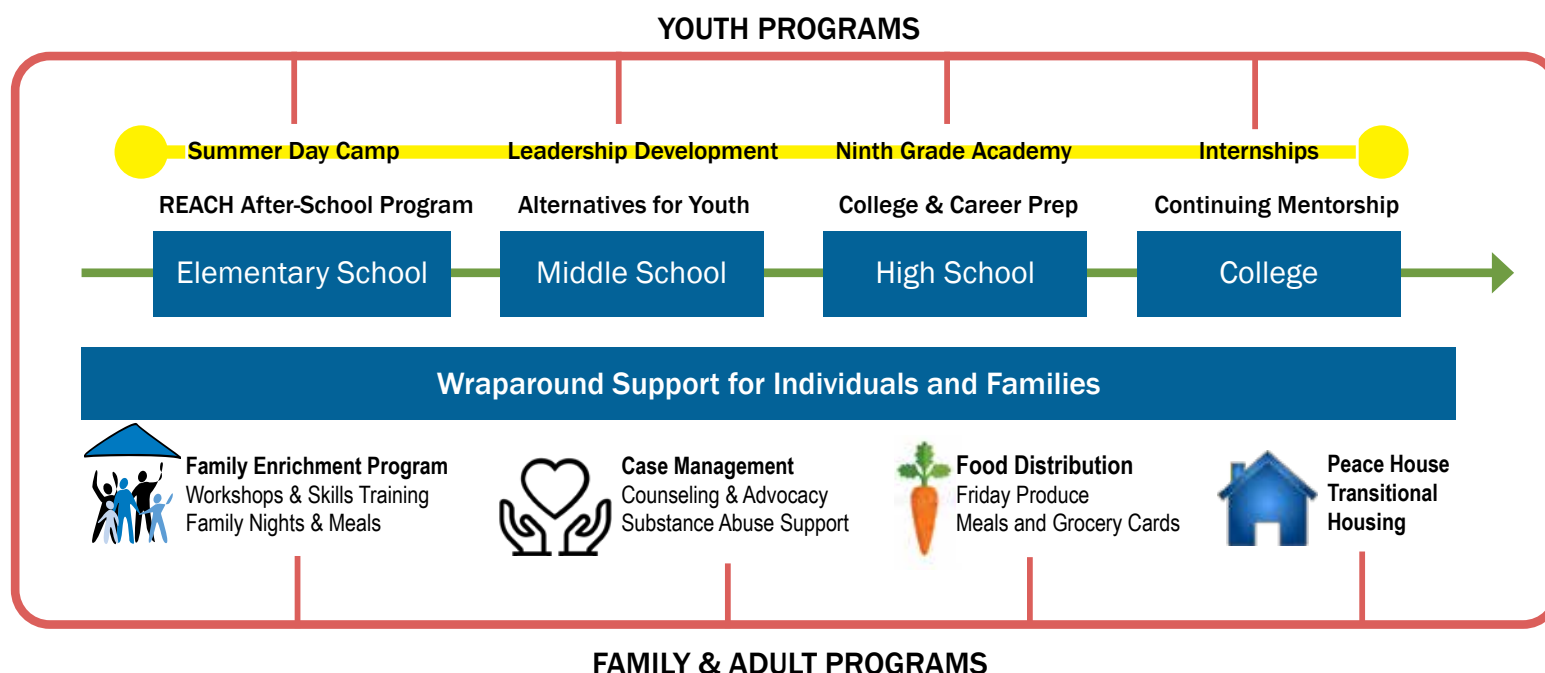
In designing and finetuning the program's individual components, Peace staff will collaborate with community partners, research existing programs and best practices, and survey our own families. Through our initial interviews, surveys, and conversations, Peace has learned that many parents are looking for special connections, support, and tools to help them navigate life's challenges.

An important component of the Wellness Program will be onsite individual therapy with two of Peace's licensed clinical social workers to help families address any trauma and underlying mental health issues that impede healing and contribute to negative cycles.

This Spring, Peace is launching our pilot program that includes counseling and two six-week programs:

- A yoga class on Wednesday evenings with a certified yoga instructor, and
- A Mom2Mom support group on Saturday mornings facilitated by Peace's two licensed clinical social workers, who are also both mothers.

All programming will take place at Peace's new Wellness Center— a recently refurbished space on the first floor of Peace House across from our main facility. To encourage active participation, Peace will be providing childcare, transportation, and special incentives. As with all Peace programs, we will continually evaluate the program's effectiveness, making adjustments based on our families' feedback, participation, and outcomes.





Thank you to all who supported the 50th Campaign!

Your collective generosity has helped build a more secure financial future for Peace.

Over 300 donors have made commitments totalling \$1.3 million to build two important savings accounts: Peace's Above & Beyond Fund and the Peace endowment at the Ann Arbor Area Community Foundation. Both funds will give Peace additional financial capacity to be able to invest in *and* sustain proven programs and initiatives that will provide meaningful and lasting impact for our youth and families.

\$50,000 — \$100,000+

Three Anonymous Donors
 African American Endowment Fund
*at the Ann Arbor Area Community Foundation
 with support from the DTE Energy Foundation*
 Timothy and Robin Damschroder
 Steve and Judy Dobson
 Rita and Chuck Gelman *
 Dave and Louise Lutton
 Stan and Robin Mendenhall
 Mike and Debbie Tirico

\$20,000 — \$49,999

Bill Brinkerhoff and Kathy Sample
 Sandra Garges and Jeffrey Kersten
 Dr. Diana Little Bequest
 Allan Newman and Roddy Wares
 Sarah Newman
 Katherine and Michael O'Rear
 John and Susan Powers
 Sally Rudisill
 Speckhard-Knight Charitable Foundation

\$10,000 — \$19,999

Anonymous Donor
 Marcia Alter
 Jack and Jean DiGiuseppe
 Martha Buhr Grimes and Bill Grimes
 Roy and Sue Muir
 Tree Town Giving Circle
 Gerry and Lizann Anderson
 Elise and John Gerich
 Susan and John Haines
 Christy Perros and Tom Dewhirst
 Amy and James Peters
 Charles Reinhart Company Realtors
 Joyce and George Schlecht
 Mary Vandewiele

\$5,000 — \$9,999

Erik and Rebecca Bakker-Arkema
 Erin and Daniel Barbossa
 Bethlehem United Church of Christ
 Anne Cooper
 Michelle and Aaron Crumm
 Ann and Brent Hollenbeck
 THE MOSAIC FOUNDATION of
 Rita & Peter Heydon
 Kevin and Tamar Murphy
 Steven J. Schlecht
 Joe and Suzanne Upton
 Doug and Sue Weber

\$2,500 — \$4,999

Two Anonymous Donors
 Harvey and Mary Amoe
 Jim and Sue Bennett
 James and Alison Corey
 Chris and Sandra Jung
 Legacy Wealth Partners
 Maureen Michael and
 Roger De Roo
 Alan Mlynek and Emily Wark
 Larry and Mary Louise O'Connell
 Daniel Papajcik and
 Jessie Newman
 Al Raymond
 Jeff and Karen Rothstein
 Kurt Schmerberg and
 Jane Nicholson
 Sheila and Dave Waterhouse
 Richard Westbury

Thank you to all who supported the 50th Campaign!

Your collective generosity has helped build a more secure financial future for Peace.

\$1,000 — \$2,499

Absolute Title, Inc.
Bank of Ann Arbor, Inc.
Peyton Bland and Becky Spangler
Bodman Law LLC
Creg and Sheila Carpenter
Christi Carter-Su and Eugene Su
Pat and John Chapman
Constance J. Cress
Carey and Jan Culbertson
Chris Dahl and Ruth Rowse
Kay and Paul Davoux
Kristine and Dave Denzin
Larry Friedman and Mary Kalmes
The Jensen Foundation
Jim and Sister Dori Gapczynski
Heinz Grassl and
Deanne E. Sovereign
Doug and Sabrina Gross
Mark and Brenda Gunderson
Linda Haab
Sarah Howard
Kevin and Laura Hudson
Chris and Sandra Jung
Christine A. Lord
Brian Maiville and Candice Burns
Patricia and Lamont Manley
Betsy and Ben McCallister
Martha McClatchey
Randy and Linda Meadows
Brian and Lillian Min
Sharon and Chuck Newman
Satchel's Barbecue
Sue Schooner
Clifford and Ingrid Sheldon
Anne and Collyer Smith
Ani and Brian Turner
Suzanne Van Appledorn
Virginia L. Weingate
Charles and Sandra Westrin
Marian Williams

\$500 - \$999

Anonymous Donor
Carol Amster *
Argus Farm Stop
David Ballou
Pat Bantle
Bonnie Billups, Jr.
Brian and Martin Bouma-Quinn
Robert and Janice Brimacombe
Pat and John Chapman
Richard and Sue Chase
Lisa Dempsey
Diane and Edward Fead
Christopher Fellin
Linda and Larry French
GBU Financial Life, District #630
Dr. Patricia Green
Jennifer Hall
Norman and Deborah Herbert
Linda Hubbard
Tom and Ann Hunt
Phyllis Husted
Janine Hutchinson
Hylant Group
Anna and Darin Lavery
Dennis Lopatin, Ph.D.
Meadowlark Design + Build
Elizabeth Moje
Mary and Mark Mueting
Northstar Bank
Gloria and Patrick O'Neill
Julia Owens
Mark and Margaret Pieroni
Marianne and Hans Rauer
Amy Sample and Jim Azim
Gary and Kit Steinaway
Jon Strite
Patrick and Diane Tamblin
Kathryn Warner and David Gilmore
Washtenaw Dairy
Kelly Williams and
Peter Hendershot

\$50 - \$499

Two Anonymous Donors
James Angle and Jacqueline Deron
Jack and Jill Arnold
Lynn Baldwin
Jim and Martha Balmer
Cynthia Barber
Sue Barker
Margaret Bayless
Marjorie Bolgos
Charlene Bonvissuto
Nancy Broxholm
Luanne Bullington
Laurie Buys
Mollie Callahan
Paul and Susan Campbell
Rev. Lori and John Carey
Laura and Jake Carlin
Mark Chesler
Sandro Cinti and Billie Ochberg
Allyson Crowley
Nancy and Steve Davis
Andrea DeAgostino and James Smith
Linda and Michael Dibble
Lisa Disch
Marjorie and Andrew Dixon
Geoffrey H. Eley and
Regina Morantz-Sanchez
Abigail Elias
Steven and Sallie Foley
Peter and Linda Forster
Randi Friedman
Kathleen and Daniel Gallagher
Nancy Gentner
Cheryl and Bob Grant
Folake Graves
Joann and Tom Green
Sandra and Clinton Greenstone
Sandra J. Harris
Mimi Harris
Annie and Brayden Henry
Loris and Bruce Hiemstra
Carsten and Heather Hohnke
Kenneth and Carol Hovey
Joyce Hunter
Stephan Johgart
Airis Johnson
Neil and Pamela Juliar
Rachel Kaplan

Nora and Fred Karsch
Gail Kelsey and William Hill
Nayan Khanna
Carolyn and Jim Knake
Eleanore Kotowski
Ann Marie Kotre
Mary Kumbier
Anna-Liisa LaCroix
Myra Larson
Terrance and Minoo Larson
The Last Word
Karen LeGassick and Leonard Wozniak
Heather Lemon
Mary Beth and Clayton Lewis
Tammy Lewis
Kevin Lill
Kevin Lynn
Christina MacKellar
Nancy Magnani
Philip Maley
Nancy Margolis
Colleen McAlinden
Susanne and Todd McDevitt
Jennifer McDonald
Ellen O'Malley McGee and
Donald McGee
Miriam Meisler
John Melangton
Ben Michelson
Jeannette Middleton
Sheryl Mullice
Lakshmi Narayanan
Glenn Nelson and Margaret Dewar
Ryan Noel
Naomi Norman
Lizabeth Nowland-Margolis and
Marc Margolis
Mark O'Boyle
Nondi Orazi and Terry Walsh
Tom and Amy Pachera
Douglas Perkins and Lauren Oshman
The Honorable Miriam A. Perry
Rev. Kenneth Phifer and
Katharine Hadley
Pickett and Associates
Robert and Mary Ann Pierce
Stephen and Christina Postema
Thomas and Gladys Pressley
Karen Prochnow

Patricia and Dennis Ritchie
Jean M. Robinson
Nicholas Roumel
Katherine and Jim Rowan
Tara Ryan
Lizabeth and Rev. Jay Sanderford
Mark Schneyer and Debbie Field
Janet Schnierle
David and Karyn Schoem
Katherine Selwa
Anne and Gordon Sheill
Pamela Sica
Lorri Sipes and Margaret Hostettler
Adele Sowinski
Cora M. Ssengoba
James and Sallie Stadel
Joyce Stein
Suzanne and Matt Steward
Missy Stults
Max and Sondra Supica
Debbie and Jim Talley
Lauren Talley
Mayor Christopher Taylor
Eileen Thacker
Jane and Nigel Thompson
Bette Thompson
Daniel Totsch
Maureen Tyra
Anne Upton
Kenneth and Emily Wachsberger
Thomas and Mary Wakefield
Lena Walsh
Sheridan Warden
Mary Russell Watkins
Ken and Mary Weber
Deborah and Michael Weber
March and Marcia Wells
James and Ollie Wesley
Carol and David Williams
Sandra Wray-McAfee
Alexa Wutt
Patricia and John Zeichman
Dr. Jonathan W. Zimmerman
Ann Zinn
Beth Ziobro and Jennifer Sieracki

* Deceased donor

Building a Sustainable Future for Peace

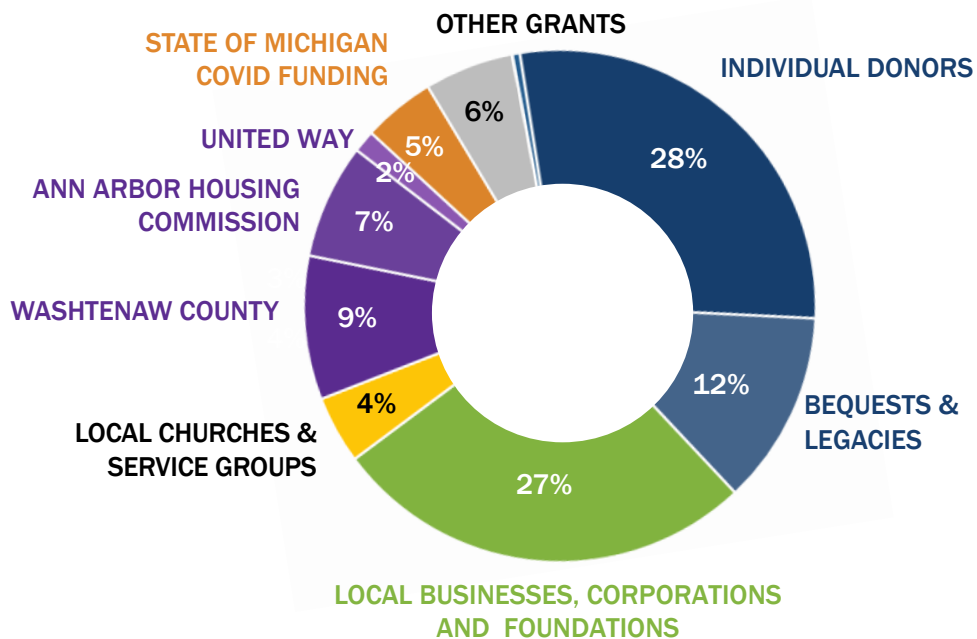
2021 Peace Financial Summary

In 2021, our community of supporters provided \$1.31 million in annual support to help Peace meet the increased need we have witnessed throughout the pandemic. Nearly 80%, or \$1.03 million, came from private sources: individual donors, family foundations, local businesses, churches, and community groups. Government grants for Covid relief and basic human services provided 21% of our annual operating support.

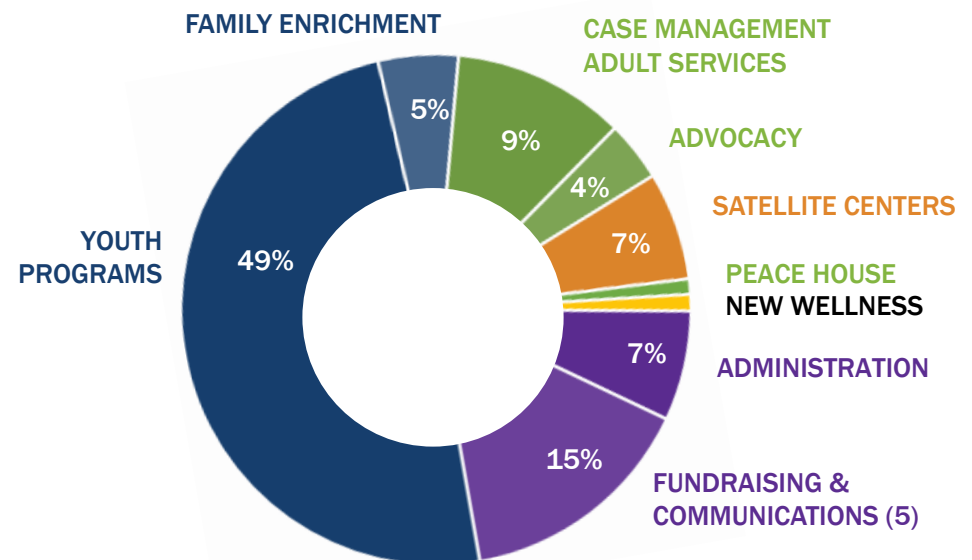
Our community's extraordinary generosity has enabled Peace to sustain and continually adjust our programming, add staff where needed, increase emergency assistance, and expand case management support to meet our families' changing needs.

Peace's low administrative costs, coupled with the support from hundreds of volunteers, also means we can continue to take care of our young people and families at very low cost.

2021 ANNUAL FUNDING SUPPORT



2021 ANNUAL EXPENSES



SUPPORT AND REVENUE ⁽¹⁾		
Individual Contributions		\$ 372,018
Corporate Support and Foundations		\$ 352,665
Churches, Community Groups, & Other Organizations		\$ 56,343
Legacies & Bequests		\$ 160,947
Washtenaw County		\$ 119,430
Ann Arbor Housing Commission		\$ 95,467
Washtenaw United Way		\$ 18,514
State of MI Covid Funding		\$ 60,000
Other Grant Funding		\$ 74,023
Program Fees ⁽²⁾		\$ 0
Building Rental Fees		\$ 450
Miscellaneous Income & Reimbursements		\$ 6,145
Total Annual Support and Revenue		\$ 1,316,002

2021 50th Campaign Contributions	\$ 880,610 ⁽³⁾
---	----------------------------------

EXPENSES ⁽¹⁾		
Youth Programs		\$ 480,675
Family Enrichment Program		\$ 49,780
Case Management: Adult Services		\$ 107,431
Advocacy & Direct Assistance		\$ 37,203
Satellite Centers		\$ 67,000
Peace House		\$ 9,570
Wellness Program Design & Development		\$ 10,260
Administration		\$ 68,017
Fundraising ⁽⁵⁾		\$ 149,000
Total Annual Expenses		\$ 978,936

Change in Net Assets ⁽⁴⁾	\$ 377,067
--	-------------------

NOTES:

1. 2021 financials shown here are preliminary, unaudited figures for Peace's Annual Support and Expenses.

Audited financials will be publicly available upon final receipt and approval of Peace's independent annual audit. Expected June 30, 2022.

2. Peace typically charges a minimal fee for Summer Day Camp, but chose to waive all fees in 2021 to alleviate financial hardships during the pandemic.

3. Includes 2021 50th Campaign payments only. Total Commitments to Peace's 50th Campaign were \$1.3 million which reflects:

\$112,500 in gifts made in 2020; \$77,250 in direct gifts to Peace's Endowment, and outstanding pledge commitments totalling \$244,090.

4. Change in Net Assets reflects 4 1/2 months of operating reserves.

5. Peace's fundraising and communications expenses, which are typically 9%, reflect additional costs associated with Peace's 50th Campaign.



THANK YOU!

Your generous annual support in 2021 was essential in helping Peace meet the increased need and challenges the pandemic continued to present for our youth and families.

\$50,000 — \$100,000+

Three Anonymous Donors
Ann Arbor Housing Commission
James A. and Faith Knight Foundation
Dr. Diana Little Bequest •
State of Michigan

\$10,000 — \$49,999

Two Anonymous Donors
2|42 Community Church
Ann Arbor Thrift Shop Association
Tim and Robin Damschroder •
Jenkins Foundation
Stacey and Mike Marsh
Stan and Robin Mendenhall •
Al and Roddy Newman •
The Pryor Foundation
Melissa and Brett Pynnonen •
Mike and Debbie Tirico •
TJX Foundation
Toyota Motor North America Gifts
Tsuha Foundation
Vineyard Church of Ann Arbor
Washtenaw United Way
Carol Weber •

\$5,000 — \$9,999

Anonymous Donor
Bethlehem United Church of Christ •
Comerica Charitable Foundation
Debbie and Joe Eggleston
J. F. Ervin Foundation
First Presbyterian Church
May Family Foundation
Ann Meredith
Roy and Sue Muir •
Bree Picower
Patrick and April Savage
Dr. Rodney Smith and Janet Kemink
Trinity Evangelical Lutheran Church
Zion Lutheran Church

\$1,000 — \$4,999

Three Anonymous Donors
Ellie Abrons
Douglas Aikenhead and Tracy Gallup
Marcia Alter •
Altruic Advisors
Cheryl and Tony Ambroza
Harvey and Mary Amoe •
Peter Andruskiewicz
Ann Arbor Area Board of Realtors
Ann Arbor Blue Ocean Church

\$1,000 — \$4,999

Ann Arbor Insurance Associates, LLC
 Ann Arbor Host Lions Club
 Frank Ascione
 Nancy Asin
 Katharine Babcock
 William Bastow and Patricia A. Green
 Sheri Belcher and Todd Tribble
 Dave and Carol Bradford
 Pamela Brandwein
 Marie and Mark Brazeau
 Buhr Education, Arts & Community
 Safety Fund at AAACF
 Busch's
 Mary Caldwell
 Paul A. Callam and Lynn Gregory
 DeLynn and Chris Carter
 Christi Carter-Su and Eugene Su •
 Elizabeth and Royal Caswell
 John Cattier
 Church World Service Inc.
 Greg and Anne Clites
 Columbia Blue Crew
 Comcast
 Diane Coxford
 Gwendolyn Davidge
 Kris and Dave Denzin •
 Jack and Jean DiGiuseppe •
 Ken and Ann Dill
 Molly Dobson
 Peter Dobson
 Esther Floyd
 Larry Friedman and Mary Kalmes •

Emma Gallo-Chasanoff and
 David Fegley
 Ashish and Aparna Garg
 GBU Financial Life, District #630 •
 Steve Glauberman and
 Margaret Schankler
 Cheryl and Bob Grant
 Heinz Grassl and
 Deanne E. Sovereign •
 Peter and Judith Gray
 Patricia Green •
 Grove Emotional Health
 Collaborative
 Mark and Brenda Gunderson •
 Linda Haab •
 Jen and Dave Haines
 Kelly and Paul Harms
 Joan Harris and Ed Sarath
 Carolyn Hastings
 David Heffner and
 Diane Wagner-Heffner
 Timothy and Shirley Hogan
 Linda Hubbard
 Paul and Ellen Hughes-Cromwick
 Tom and Ann Hunt •
 Martin and Susan Hurwitz
 Sue Iott
 John and Gretchen Jackson
 Mark Jacobson
 Mary Anne and Eric Jaeger
 Cathleen and Valdemar Jaskiewicz
 Adam Jaskiewicz
 Roger and Tracy Jeanty

Herbert Katz
 Kiwanis Club of Ann Arbor
 Linda Korobkin
 Jane Landefeld
 Linda and John Larin
 Donna and Michael Lasinski
 John Lilley
 Nate and Karli Loofbourrow
 Dennis and Jane Lopatin •
 Michele Madden
 Elida Malila
 Bill and Sally Martin
 Martha Mayo and Irwin Goldstein
 Marty McClatchey •
 Mike McManus and Kathleen Menerey
 Nora Milam
 Dave Mioduszewski and Nancy Pace
 Alice and Hugh Morgan •
 Pat and Tom Morrow
 Network for Good
 Sharon and Chuck Newman •
 Larry and Mary Louise O'Connell •
 Daniel Papajcik and Jessie Newman •
 Kevin Patterson
 Christy Perros and Tom Duharst
 Helen Peters
 Mark and Margaret Pieroni •
 Plante Moran, PLLC
 THE MOSAIC FOUNDATION of
 Rita and Peter Heydon •
 Pary Reza
 Rotary Club of Ann Arbor
 Trish and Van Sandstrom

Joyce and George Schlecht •
 Jo and Mike Semanske
 Anne and Gordon Sheill •
 Lakshmi and Sanjay Shetty
 Pete and Carol Sickman-Garner
 Skyline High School - Skywell Club
 Janet Smith
 Linda and Richard Solomon
 Spiritual Assembly of the Baha'is
 of Ypsilanti Township
 Cora Ssengoba •
 Gary and Kit Steinaway •
 Ann Surratt
 Jean Teifer
 Treasuring Christ Church
 Chris and Emily Trentacosta
 University of Michigan Credit Union
 Bill and Dusty Upton
 Joe and Suzanne Upton •
 Sue Van Appledorn •
 Jan Van Dijk and
 Marcia Luke-Van Dijk
 Rebecca M. Vest
 Victor and Felecia Vojcek
 Tim and Laurie Wadhams
 Scott and Gail Weber
 Eileen Weiser
 Wendy Wellman
 Barbara Wendling
 Cherry and Ken Westerman
 Chuck and Sandy Westrin •
 Jacquelyn Wolf and Barry Levy
 Jane and Tom Ziesemer

OUR GENEROUS COMMUNITY OF SUPPORTERS

\$500 — \$999

Three Anonymous Donors
Abbot School PTO
James and Sue Andersen
Ann Arbor Chapter of the Links
Elaine and Ralph Anthony
Sanam Arab
Mary E. Ardner
Gaard and Ellen Arneson
Jim and Lisa Baker
Erik and Becky Bakker-Arkema •
Gwendolyn L. Ball
Joey Barker
Richard and Margaret Barnich
Annastasia Bell
Lisa and Tim Bell
Eli Bilek
William and Olivia Birdsall
Frederick Blanck and Andree Joyaux
Amelia Brinkerhoff
Amanda and Benjamin Carlisle
Nancy Castle
Carine Cattier
Richard Chang
Richard and Sue Chase
Frank and Judy Colligan
Wayne and Melinda Colquitt
Steve and Judy Dobson •
Will and Bianca Durand
Sandra and Douglas Elser
Daniel and Martina Ezekiel
Dr. John and Jackie Farah
Nicole Frei
Bernard Friedman
Ann and William Furtwangler
Susan K. Glowski and
A. Galip Ulsoy
Google Ann Arbor

Daniel and Norma Green
Dr. Patricia Green
Jennifer Hall •
Sharon Hamilton
Larry Hauptman and Linda Langmore
Doug and Kathy Heady
Loris and Bruce Hiemstra •
Fulter and Rebecca Hong
Robert and Paula Hotaling
Lisa Ingall
William and Joan Jaynes
Barry and Leslie Johnson
Robert Johnson
Harvey and Deborah Juster
Leonard and Barbara Kafka
KPMG U.S. Foundation, Inc.
Naomi Levin and Ben Passey
Gregory Levine and Kristin Seefeldt
Sara Ljungman
Jeremy Lopatin
Lois and Bill Lovejoy
Kristin and Steve Lozon
Marco Ma
David Martel and Patrick Francis
Anne and Ralph Martin
Jennifer McDonald •
Jack Melangton •
Apostolos and Carol Michaelides
Jeannette Middleton •
Toni Morell and Tom Root
Andrew Mortensen and
Christine M. Veenstra
Mary and Amir Mostaghim
Amy Myers
Elizabeth Nelson
Margery O'Malley
Joe and Karen O'Neal

Nondi Orazi
and Terry Walsh •
Andrew Perry
Janet and Steven Popper
William and Betty Ratcliff
Jim and Bonnie Reece
Dr. Leonard and Dr. Virginia Rezmierski
Sue Romano
Abby Rosenbaum and Angelo Bick
Diane Rosenblum
Tara Ryan
Charles and Roxie Scrase
Catherine Shaw
Lorri Sipes and Margaret Hostetler •
Cresson and Karen Slotten
Richard Soble and Barbara Kessler
James and Sallie Stadel •
Suzanne and Matt Steward •
Jon Strite •
Max and Sue Supica •
T+E+A+M
United Way for Southeastern Michigan
Mary Vandewiele •
Dietmar Wagner
Mary Russell Watkins •
Rev. Gabriel S. Weinreich
Martha S. Weintraub and Peter D. Smith
Jann Wesolek
Dr. David Seaman and Dr. Helen Zylman

\$250 — \$499

Two Anonymous Donors
Patty and Rob Aldrich
Donald and Charlotte Allen
Jeanice Anonymous
Karen Danzeisen
Mary Ardner
Kenneth and Karen Aungst
Anne Baird
Lynn Baldwin
John Ballard and Elizabeth Lindsley
Sue Barker
Lucy Bauman
Beara Bakes
Barbara Behnke
Bethlehem United Church of Christ
Rob and Emma Boley
Molly Boren and Carlos Gonzalez
Alan Burg and Kenneth Hillenburg
Tom Burroughs
Paul Campbell and Sarah Haynes
Kathleen Cho and Eric Fearon
Katherine Constantinides
David L. Corsa and Ann Sprunger
Robert and Bennie Crenshaw
James Crowfoot and Ruth Carey
Ellie Cruze and Kevin Hart
Daisy Chain Temple #212
Karen E. Danzeisen
Laura and Adam Davie
Peter and Norma Davis
Edward Dawson
Delta Kappa Gamma Society International,
Alpha Rho Chapter
Dempsey Incorporated
Audrey and Paul DiMarzo
Marjie and Andrew Dixon •
Gloria J. Edwards
Ira Fisher
Dr. Philip and Kathy Fleming
Jerry and Lynn Fouchey

\$250 — \$499

Cathy Franklin
 Aaron Fremuth
 Randi Friedman •
 Kristi Gilbert and
 Douglas Bernardin
 William and Joan Jaynes
 Wallie and Janet Jeffries
 Judy Judd
 Chris and Sandy Jung •
 Diane Kalata and Dennis Halalay
 Gail Kelsey and William Hill •
 Mary and David Keren
 Grace Helms Kotre and
 David Kotre
 Jan Ledbetter
 Sandra and Steve Ledbetter
 Christine A/ Lord •
 Michael and Meredith Lovelace
 Teresa Low
 Ramaswami Mahalingam
 Michele and Eric Mahler
 Patricia and Lamont Manley •
 Griff and Pat McDonald
 Alice Michael
 MOVE Wellness
 Glenn Nelson and
 Margaret Dewar •
 Sharon and Chuck Newman
 Al Newman and Roddy Wares •
 Michael and Chrissy Nisson
 Suzanne Ohmit
 Jennifer Olmstead and
 Brady Baybeck
 Constance Olson
 Jan Onder
 Tom and Amy Pachera •
 Susan Pachera
 Mariel Peck
 Mary and Keith Phelps
 Eunice Phillips

Bob and Mary Ann Pierce •
 Todd Pierce-Ryan
 Pioneer High School PTO
 Jim and Mary Pizzimenti
 ProvarMedia (Bryan Johnson)
 Robin Queen
 Marianne and Hans Rauer
 Al Raymond •
 Real Estate One Charitable
 Foundation
 Robertson Family
 Megan Rodgers and
 Julie Crichton
 Ron's Garage
 William Sample
 Schwaebischer Unterstuetzungs
 Verein
 Drs. Linda and James Selwa
 Nancy Shiffler
 Susan Smith
 Adele Sowinski •
 Helen and Jeff Starman
 Cynthia Stewart
 Janice and Peter Tainsh
 Karen Thomas
 Bette Thompson •
 Scott and Samantha
 Van Appledorn •
 Suzanne Van Appledorn •
 Angela Walker
 Ken and Mary Weber
 Noel Ann
 and Christopher Winkler

\$100 — \$249

3M
 Joanne Alexander
 Shellee and Lauren Almquist
 Jeff Alson
 American Baptist Women's Ministries
 Marci and Bill Ammerman
 Robert and Karen Anderson
 Rae Ann Anderson-Weymouth
 Barbara and Pablo Alvarez
 Dan and Monica Atkins
 Marcie and Michael Austerberry
 Kathleen Baines
 Brian Ball
 Rich Ballard
 Jim and Martha Balmer
 Pat Bantle •
 Ruth Bardenstein and Jim Roll
 David and Tracy Barrett
 Percy and Cheryl Bates
 Patricia Bauer
 Molly and Matt Bazzani
 Stephanie Beach
 Angela Benke
 Greg Bergin
 Rosina Bierbaum
 Robert and Sandra Birdsall
 Ilene Birge
 Gloria Bodnar
 Carol Sue Brodbeck
 Max and Sandra Bromley
 Shelley and Gary Bruder
 Charles and Kathleen Budd
 Arno and Patricia Buhrer
 Mary and Richard Burney
 Daniel and Adrienne Burroughs
 Heidi and David Butz
 Ted and Lucy Cage
 Jean Carlberg and Bunyan Bryant
 Sara and John Carriere
 Alice Carter
 Valerie Castle
 Dr. Craig Cattell and Catherine Burt
 Julie Christofferson
 Nancy Clark
 Michael and Cheryl Coles
 Karen Cooper
 Jim and Pam Corbett
 Judith Coucouvanis

William Crawford and Elizabeth Silver
 Christine Dailey
 Kasey Damm
 Cathrine Daniels
 Danmar Products, Inc
 Dianne and Bob Davis
 Kay and Paul Davoux
 Sue Dempsey
 Joyce and Michael Deren
 Allison and Mike DeWolf
 Cindy Donovan
 Josh Downey
 Amy Doyle
 Bill Dufek
 Peter and Grace Duren
 Dorothy Ebersole
 Rick Ekberg
 Geoff Eley and
 Regina Morantz-Sanchez
 Nicole Ellison
 Phillis Engelbert
 Peter England
 Cary and Suzy Engleberg
 Mark Fancher and Lorrain Brown
 Diane and Ed Fead
 Julie Feldkamp
 Chris Fellin
 Phillip and Phyllis Fellin
 Sally Fink
 Carol Fletcher
 Peter and Linda Forster
 Leslie Fort
 Kathryn Foyle and Thomas Sorensen
 Versile and Judy Fraleigh
 Francelle and Kevin Fulton
 Elissa Gaies
 Chris and Eric Gajar
 Albert and Karen Gallup
 Gerald Gardner
 Celia and Paul Gargaro
 Lauri Gause
 Marvin and Florence Gerber
 Christine Glaze
 Julie and Adam Goldsmith
 Carlen Gomez Fifer
 Sally and Bill Goshorn
 Ann Green
 Bob and Pam Guenzel

Dianne Haas
 Mary Ellen Hagel
 Deanna Hair
 Jennifer Hall
 Kevin Hankinson
 Jim Hanselman and Joann Ronzio
 Georgette Hansen
 Roger and Helen Harms
 Kathryn Hartung
 Laura Heinrich
 Katy and Woody Held
 Steve and Mary Hewlett
 Susan and Joel Hickey
 Christina and James Hicks
 Vicki Higgins
 Jeff Higgins
 Ken and Carol Hovey
 Daniel Hubbard
 Gail Hubbard
 Phyllis Husted
 Joanie and Mike Jados
 Judy and Fred Jahnke
 Sarah Jaworowski
 Garnet Johnson and Lennart Kihlberg
 Scott and Tamara Johnson
 Matt Jurcak
 Janet Kahan
 Rachel Kaplan
 Brenda Kapp
 Larry and Carole Katz
 Sarah Keith
 Lynden Kelly
 Susan Kennedy
 Steve and Judy Kesler
 Gaia Kile and Beth Barclay
 Derek Kirchner
 Mark Knox and Sheryl Cornicle Knox
 Cary Kocher
 Elizabeth Kolb
 Mariana Kopacz
 James and Laura Kosteva
 Peter Larose and Stacy Mates
 Myra Larson
 Terry and Minoo Larson
 Dennis LaVoy
 Darcy Lees
 Karen LeGassick and Len Wozniak

OUR GENEROUS COMMUNITY OF SUPPORTERS

\$100 — \$249

Margaret Levenstein and David Arsen
Rachel and Aaron Levy
Ken and Mary Lewison
Patricia Lin
Joanna Barnyak Link
Michelle and Bob Loukotka
Kirk and Michelle Loveless
Barbara Lucas
Chris MacKellar
Phil Maley
Mara Markovs
Liz Marshall
Fred and Mary Mayer
Ryan McGee
Kyle McLaughlin
Bob McMurray
Steve Meagher
Doris Melvin
David Mendenhall
Priscilla Menzies
Beverly Mesberg Yashar and John Mesberg
Joyce and David Meyer
David and Donna Meyer
John and Amy Milanovich
Timothy Miller
Jill and David Miller
Alan Mlynek and Emily Wark •
Hattula Moholy-Nagy
Denise Moyer
Ryan Muneio
Steve Nason
Angela Newing
Mary and Chris Newton
Tom and Darlene O'Brien
Tanya Padgett
Susan Palmiter
Mary Joan and Ron Papajcik
Chet and Carole Pawloski
Jillian Pearring
Beth and Richard Pearson
Kayla Pennoyer
Perry Pernicano
Thelma Perry
Amy and James Peters •
Rev. Kenneth Phifer and Katharine Hadley

Martha Price
Susan Priller
Karen Prochnow
Jeffrey Protentis and Barbara Raab
Darrell Randle
Susan Rasmussen
Marianne and Hans Rauer
Laura and Kenneth Raynor
Reau & Associates, PC
RelaxStation LTD
Stacy and Michael Richmond
Amy and Charles Roehrig
Alice Rolfes-Curl
Katherine and Jim Rowan
Linda Rowse
Tara Ryan
Amy Sample and Jim Azim •
Dianne Santinga
Anthony Sasinowski
Jim Schaafsma
Zona Scheiner and Bennet Wolper
Mary Schmitt
Jeri Schneider
Alana Schoenle
Lois M. Schultz
Steven and Joanne Schultz
Brandon Sears
Audrey Seasholtz and Robert Thompson
Gertraude Seitter
Harriet Selin
Julie and Scott Seymour
Violet Shaffer
Bruce and Lisa Shapiro
Patrick and Susan Shields
Jimmy Simonte
John and Margaret Sivertson
Lynette and Macklin Smith
Rick and Sue Snyder
Patricia Sonntag
Adele Sowinski
Barbara Spencer
Spiritual Assembly of the Baha'is of Ann Arbor
Nia Sponberg and Mollie McDermott
Linda Sprankle
Ted and Elizabeth St. Antoine

Jim and Sally Stansik
John Stark and Lynne Robins
Rita and Sheldon Stark
Kathryn Steinaway
Margaret and Nicholas Steneck
Ray and Alena Stocking
Cathy and Rob Stone
Peri Stone-Palmquist
Lucy Stratton
Jon Strite
Nancy Strong
Alan and Gail Sugar
Michael Suggitt
John and Janet Talbot
Stephen and Ellen Taylor
Gabrielle Tazzia and James Schaefer
Mark and Johnese Thibault
Steven and Madeline Thiry
Andrew Thomas and Rina Miller
Geoffrey Thomas and Kelly Atkinson-Thomas
Debbie Thompson
Dave and Colleen Thurston
Tomi Tonomura
Chelsea and Aaron Valdes-Pierce
Matthew and Greta Valmassoi
Priya Varadan and Sundu Brahmasandra
Eric and Mari Veenstra
Mona Walz
Sherry Warden
Charles Warpehoski and Nancy Shore
Washtenaw Master Gardeners
Jacki and David Weisman
Carol Welsch
Dr. Tracey Wentz and Chuck Blackmer
Carol and Dave Williams
Orval Williman
Stella and Pete Wixom
Shirley Wood
Patty and John Zeichman

\$1 — \$99

Four Anonymous Donors
Naomi and Oscar Alcaine
Kevin Allport
Ben Ambrosino and Jordan Peshke
Coert Ambrosino
James Angle and Jacqueline Deron
Jessica Antanaitis
Michael Appel
Dayna Asante-Appiah
Shaina Ashare
Shauna Babcock and Gary Snyderman
Samantha Basile
Kurt and Anne Berggren
Kasia Bielak-Hoops
Patricia Blackwell
Erika Block and Jasmin Ashakih
Adam Bodnar
Thomas Boom
Carol Borgeson
John Boyd
Matt Boylan
Mary Ellen Brady
Ann Brennan
Beth Brenner Wallace and David Michael Wallace
Nancy Broxholm
Mary Ann Buckley
Glenn Bugala
Lori Bukoski
Carolyn Burnstein
Bryan Butterworth
Julia Butz
Judith Calhoun
Linda Cameron
Bessie and Clarence Campbell
Phong Cao
Hannah Carl
Julie Case
Judith Cawhorn
Carol Chase
Richard and Sue Chase
Brooke Cheney
Duly and Anthony Chiappetta
Michele Christensen
Elaine Chottiner
Chris Cicotte
Kristin Cisco

Daniel Clifford
Geraldyn and Daniel Cogan
Marian and Sheldon Cohen
Kent Conness
Cory Cooper
John Cowman and Denise Mahoney
Jacqueline and Eric Crabtree
Charles and Bonnie Crooks
Virginia Dabich
Sharon and Michael Darga
Nancy and Steve Davis
Jennie Day
Daniel Decaire
Rocco DePietro
Ginger Derron
Barbara and James Dick
Paul and Annemarie Dolan
Mary Dolan
Katie Donahue
Chris Dority
Kailey Doty
Dee Drews
Cory Dunham
Connie Dunlap
Barbara and Herb Eagle
Joseph Eisman
Scott Ellis
Karen and Raymond Essell
Robert and Heidi Ewing
Ben Ewy
Sally Fekety
Beverly and Gordon Flynn
Leslie Ford
Jeff and Monica Forward
Judy Francis
Michael Frank
Ryan Franke
Charles Frenzel
Joseph Gable and Dominique Abed
Daniel Galgoul
Alexandria Gaynier
Matt Genereaux
Nancy Gentner
Sharon Gillespie
Rebecca Gracia
Barb and Randy Greschaw
Ryan Grosinger
Sondra Gunn

• ANNUAL DONORS WHO ALSO SUPPORTED PEACE'S 50th CAMPAIGN

\$1 — \$99

Jan and Talbot Hack
 Carole Hahn
 Jill Halpern
 Carrie and Gregg Hammerman
 Anna Haney
 Andy Hargreaves
 Monica and Jeff Harrold
 Scott Henderson
 Annie and Brayden Henry •
 John and Martha Hicks
 Lorna Hildebrandt
 Nicholas Hinz
 Carolyn Holcomb and
 Bonnie Padley
 Harriett Holzapfel
 Aaron Hula
 Josephine Iannone
 Rochelle and Stephen Igrisan
 John Israel
 Tom and Sandra Jameson
 Jane and Owen Jansson
 Lois Jelneck
 Peter and Pat Jessup
 Blake Jobkar
 Vionne Johnson
 Jeff Johnson
 Elginne Johnson
 Jessica Johnston
 Lindsay Juarez
 Katrina Kaczynski
 Ellen Katz
 Geraldine Kaylor and Jeffrey Rauch
 Isadore and Linda King
 Brad Kirchoff
 Joshua Klebba
 Gay Konschuh
 Kroger South Maple Rd
 Ryan Lagerquist
 Paul Lalinsky
 Aaron Lalonde
 Shelley Larned
 Jesse Larner
 Patricia Lennington
 Linda Lewis
 Angelika Lewis
 Brent Lofgren
 Jefferson Lowe

Nick Lusardi
 Conrad Macina
 Sharon Martinez and Ray Krueger
 Scott McGaw
 Liane and John Measell
 Harry Mika
 Susan Miller and Allen Batteau
 Meira Miller
 Michael Moran
 Dylan Mulder
 Horst and Maria Mulzer
 Brigitte Muthig
 Jon Naylor
 Sylvia Nesmith
 Judith Newman
 Rachel Newman and Yossef Zekic
 Trina O'Boyle
 Pat Parin
 Bud and Sharrie Parke
 Dorothy and Donald Peacor
 Noel Perry
 Rebecca Peshkin
 Carly Petri
 Anthony Pike
 Michael Pisarski
 Don and Marjorie Plumb
 Diana and Bill Pratt
 Anne Preston
 William Ramirez
 Gregory Ramsay
 Tony Randhawa
 Linda Reddick-Lewis
 Paul Reingold and Julie Bedore
 Bettina Richmond
 Jan Rishel
 Jean M. Robinson
 Jonathan Robinson
 K. Roncoli
 Robert and Joan Rose
 Gay Ellen Rotrock
 Chris Runde
 Greg Rupp
 Veronica Sanitate and
 William D. Middleton
 Karmen Saran
 Thomas and Charlene Schallhorn
 Doug Schantz

Molly Scott
 Christina Scurlock
 Amy Shepherd
 Eve Silberman
 Bryant Smith and
 Alison Campbell
 Rosemary Bernice Smith
 Zach Smith
 William Solomon
 Ed and Eva Solomon
 Carol and Bob Spaly
 Kate Speckman
 Abby Spickard
 Ragadeep Sriperumbudur
 Randall Stephens
 Dianne Stille
 Swisher Commercial
 Sam and Fran Talsma
 Patrick and Diane Tamblyn •
 Alisha Taranek
 Noah Tobes
 Rebecca Tramp
 Elizabeth Trudeau
 Quinton Trudell
 Charlie Upton
 Eliza Upton
 Sam Upton
 Allison VanBrandt
 Dorinda VanKempen
 Rebecca Vaughn and
 Devyn Bonatus
 Brian Vitale
 Dr. Marie Vitale
 Lindsay and Jonathan Vlasak
 Marlina Voigt
 Bianka VonKulajta
 Mary Nehra Waldo
 Liz and Randy Ward
 Darrell and
 Monique Washington
 Susan J. Weber
 Alan Weder
 James Weindorf
 Janice and Ronald Weston
 Steven Whetstone
 Erick White
 Lois J. Whitehead

Billy Whitehead
 Pamela Widmayer
 Amber Willis
 Mark and Jane Wilson
 Jim and Deb Winter
 Nelson Wolf
 Stewart and Carolyn Work
 Angela Yang
 Joshua and Kara Yde
 John and Stephanie Zaiantz
 Marcus Zeoli

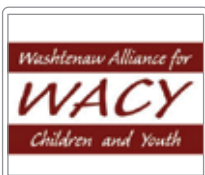
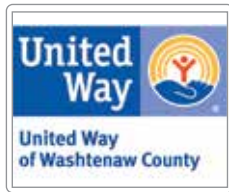


Dr. Diana Little was a great friend of Rose Martin's, and the two would often take long walks together. A native of Detroit and a graduate of Wayne State Medical School, Dr. Little was also one of the few women who practiced obstetrics and gynecology as an OBGYN when she first started her medical practice. She had over 58 years of experience treating women as a private practitioner, primarily through St. Joseph's Mercy Hospital.

As a long-time donor to Peace, Dr. Little believed deeply in the wraparound support Peace provides mothers and families. She passed away last April at the age of 82, and left a meaningful gift to Peace as part of her estate.

Her generous bequest will be used to support Peace's case management services and wraparound support — including Peace's new Wellness Program.

OUR VALUED COMMUNITY PARTNERS



Abbot School PTO
 Absolute Title, Inc.
 Amcor Rigid Packaging
 American Baptist Women's Ministries
 Ann Arbor Chapter of Links
 Ann Arbor Host Lions Club
 Ann Arbor Insurance Associates, LLC
 Ann Arbor Public Schools
 Ann Arbor Respite Care
 Ann Arbor Thrift Shop Association
 Anna's Kindness
 Arbor Farms Market
 Argus Farm Stop
 Bank of Ann Arbor, Inc.
 Barb Young State Farm
 Best Buy Foundation
 Bethel AME Church
 Bethlehem United Church of Christ
 Bodman Law LLC
 Calvary United Methodist Church
 Charles Reinhart Company, Realtors
 Chartwells School Dining Services
 Church World Service, Inc.
 City of Ann Arbor
 Comcast's Lift Zone
 Comerica Charitable Foundation
 Daisy Chain Temple #212
 Delta Kappa Gamma, Alpha Rho Chapter

Delta Sigma Theta Sorority Ann Arbor, Alumnae Chapter
 Detroit Street Filling Station
 Dicken School PTO
 Durham School Services
 Eastern Michigan University School of Social Work
 Elmo's Liberty Street T-Shirts
 First Presbyterian Church
 First Unitarian Universalist Church
 Forsythe Middle School
 Fustini's Oils and Vinegars
 GBU Financial Life, District #630
 The Henry Ford Museum
 King of Kings Lutheran Church
 Kiwanis Club of Ann Arbor
 Kroger Co. Plymouth Road Store
 Lawton School PTO
 Living Grace Ministry
 Logan Elementary Student Council
 Lord of Light Lutheran Church
 New Beginnings Community Church of Washtenaw County
 Noodle Partners
 Northstar Bank
 Produce Station
 Reau & Associates, PC
 Rotary Club of Ann Arbor
 Rozettes by ReKlove
 S. I. Company, LLC

Schwaebischer Unterstuetzungs Verein
 Second Baptist Church
 Slauson Middle School
 Spiritual Assembly of the Baha'is of Ann Arbor
 Spotlight Homes
 St. Clare's Episcopal Church
 St. Joseph Parish
 Telluride Association
 The Discovery Center
 The Hair Spot
 The Last Word
 Treasuring Christ Church
 Tribble Painting Company
 Trinity Evangelical Lutheran Church
 University of Michigan Medicine - Community Health Services
 University of Michigan Medical Students
 University of Michigan School of Social Work
 Washtenaw Intermediate School District
 Washtenaw Master Gardeners
 Whole Foods Market
 Zingerman's Community of Businesses
 David Zinn
 Zion Lutheran Church



Reflections from a recent Peace Staff retreat

What we Do:

We are a one stop shop for families.
We take care of people.
We keep people safe. We stabilize.
We are the people to call with the best and worst news.
We plant seeds and pull weeds.
We strengthen our community.
We inspire and find greatness in others.
We create hope.
We advocate.
We create traditions.
We connect communities.
We are family. We are the village.

Why we come to Peace every day:

To serve and to learn.
To make a difference.
To be someone's person.
Because we care.
Because Peace is an authentic place.
Because Peace is family.
Because we can be real.
Because I see how connections make a difference.
To change lives.



PEACE NEIGHBORHOOD CENTER STAFF

Bonnie Billups, Jr.
Executive Director

Ella Olive
Office Manager

Cornelius Olive
Building Maintenance Supervisor

Suzanne Upton
Development Director/
50th Campaign

Alexa Wutt
Development Manager

Jeremiah Young
Information Technology Assistant

Latricia Juide
Kitchen Manager

Larry Mitchell
Transportation

John Ulmer
Transportation

MaryAnn Johnson, LMSW
Youth Programs Director

Bernice Hardman, LMSW
Family Enrichment Coordinator/
Field Placement Supervisor

Lauryn Comer
College & Career Prep Coordinator

Anabel Cruz, BSW
Satellite Centers Youth Program Coordinator

Taylor Gamble
Alternatives for Youth Program Coordinator

Raven Vawters
Children Services Coordinator

Elanda Curry, BSW
Case Manager

Kelly Martin, BSW
Case Manager

Pat Patillo
Case Manager

Allison DeWolf
Programs Assistant

Johnathan Faulkner
Programs Assistant

Justin Gordon
Programs Assistant

NaTiyah Hugan
Programs Assistant

Dwight Johnson
Programs Assistant

Dana Peterson
Programs Assistant

Solomon Putten
Programs Assistant

Robert Turner III
Programs Assistant

Madeline Zandhuis
Programs Assistant

OUR VISION

A community where personal growth, opportunity and diversity are constant; the cycle of poverty and social and economic inequality has been broken.

OUR MISSION

To provide programs for children, families, and individuals who are affected by social and economic problems—to help them discover options, enhance skills, and make choices that lead to self-sufficiency and positive community involvement.



1. We value openness, consultation, diversity and inclusion.
2. We prioritize our programs. We create and implement new ideas for optimum effectiveness.
3. We nurture our clients to reach their highest potential.
4. We employ competent, motivated people, and provide the training, tools, environment, and opportunities for them to succeed with our clients.
5. We focus on what we do best, and collaborate with those who are “best in class”.
6. We value our donors’ and sponsors’ involvement & seek to include them.
7. We address inequality in ways that help our community learn, heal and change.
8. **WE CHANGE PEOPLE’S LIVES.**

2021 PEACE BOARD OF DIRECTORS

Amy Peters, President

*Director of Research Computing & Infrastructure,
University of Michigan LSA Technology Services*

Lamont Manley, Vice President

*Project Manager, University of Michigan's
Institute for Social Research*

Steve Schlecht, Treasurer

*Chief Financial Officer & Executive Director of
Administration, University of Michigan LSA*

Kurt Schmerberg, Secretary

Vice President and CFO, Affinity Valuation Group

Nicole Perry Banks

Associate Dean, University of Michigan

Susan Haines

*Retired Elementary School Teacher,
Ann Arbor Public Schools*

Kevin Hudson

Class Principal, Pioneer High School

Ellen O'Malley McGee

Teacher, Haisley Elementary School

Alan Mlynek

*Senior VP, Solutions Architecture
Noodle (Technology Network for Universities)*

Kevin Murphy

*Partner and Wealth Advisor,
Legacy Wealth Partners*

Family. Love. Home.



Thank you for being part of our Peace Neighborhood Family —
and for helping us provide a safe place and loving home for many in our community.



To stay connected to all that happens at Peace Neighborhood Center:



@peaceneighborhoodcenter



@peacencenter



@PeaceNCenter

For more stories on Peace's impact, please visit: peaceneighborhoodcenter.org/about-us/50-stories

1111 North Maple Road, Ann Arbor, MI 48103 | (734) 662-3564 | peaceneighborhoodcenter.org